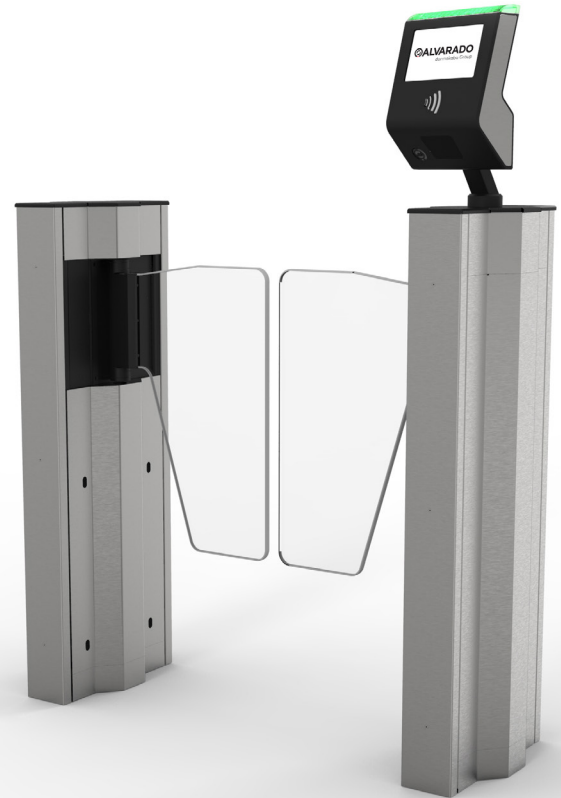


# ULTRA Q-ACT










The UltraQ-ACT is the newest intelligent admission device from Alvarado™. When a guest presents a valid entry credential, the motorized panels open away from the guest, providing a clear path for quick entry.

## Benefits:

- Provides touchless entry for guests
- Allows guests to self-scan printed and mobile access credentials
- Frees ticket takers to perform valuable customer service functions
- Suitable for indoor and outdoor use
- Battery powered / Wi-Fi communication
- Portable and easy to move



## Features:

-  **Media Validation** . . . . . Validates all types of credentials including 1D/2D printed & digital (mobile phone) barcodes, RFID, Apple and Google NFC digital wallet smart tickets; option to add other readers such as biometric
-  **Bright TFT Display** . . . . . 7 " color display provides customizable visual instructions for guests and a touchscreen interface allows operator to access administrator functions; screen remains visible in bright environments
-  **Fast Entry Throughput** . . . . . Highly responsive validation—can accommodate up to 30 validations per minute
-  **ADA Passage Widths** . . . . . Optional ADA panel widths allow for, wheelchair, walker and stroller access
-  **Attendant Notification** . . . . . LED lights on the rear of the device notify attendants of presented credential status (valid / invalid) and identifies when special tickets are presented
-  **Custom Graphics / Audio** . . . . . Allows customized screen graphics and sound files to be associated with presented credential status
-  **Custom Lighting** . . . . . Highly visible LED's provide notification of presented credential status; during non-scanning times, LED's provide color transitions or solid illumination in any RGB color
-  **Bi-Directional Entry / Exit** . . . . . UltraQ scan head supports switching between entry and exit configurations, allowing the same pedestal to support either entry or exit validation
-  **Server Communication** . . . . . Wireless or optional wired LAN communication (Dual-band 802.11ac 2X2 MU-MIMO)



**UltraQ: The Latest Technology for Venues**

From the customizable LED touchscreen to the multiple touchless scanning options, the UltraQ-ACT provides the latest access technology for entertainment and sports venues.

**Available Passage Widths**

Standard 28" passage width  
 ADA 36" passage width

**Common Applications**

- Guest self-validation of access credentials
- Where a barrier turnstile is desired
- Exclusive / VIP access

**Typical Installation Sites**

- Theme and water parks
- Zoos, aquariums and museums
- Speedways and racetracks
- Stadiums and arenas

**Available Options**

Over a dozen available options, including:

- Wifi communication (802.11a,b/n)
- Panel illumination
- Logo etching on the barrier or side panels
- Custom cabinet colors
- Floor saver platform

**Ticketing System Integration**

The UltraQ-ACT works seamlessly with GateLink10—our widely used admission control software. GateLink10 also provides direct plug and play connections to widely used ticketing / access systems such as Ticketmaster Presence. Alvarado also offers DirectConnect API, which can communicate directly with third-party systems.

**Fire System Integration**

The UltraQ-ACT easily integrates to facility fire systems. Panels will open in the exit direction and remain open to provide a clear passageway for exiting guests.

**GateUtility**

As an added benefit, the UltraQ Portable Pedestal and all intelligent admission products from Alvarado come with GateUtility (GU). This browser-based application provides remote control of all Alvarado devices installed within a facility. For example, using any browser accessible device, GU allows the facility to:

- Change screen graphics and sound files
- Change turnstile operational modes
- Open individual (or all) turnstile barriers to provide a clear passageway during or after an event
- Update software and device configurations

**Dimensions**

Shown in inches and [mm]

