

CRI

Corner Guard

The CRI is a fixed installed corner guard that protects fixtures and cases in grocery and retail stores. It also provides light duty protection for racking and similar fixtures in warehouses.



TYPICAL INSTALLATION SITES

- Supermarkets
- Retail Stores
- Warehouse Stores
- Specialty Stores

FUNCTION

The CRI is a corner guard that protects fixtures and cases from impact damage caused by floor scrubbers, shopping carts, pallet jacks and stocking carts. The product is fixed installed, using floor anchors.

AVAILABLE HEIGHTS

The CRI is available in 12", 16" and 24" heights.

MATERIALS AND FINISHES

The CRI is fabricated from 7-gauge steel. The finish is bright chrome.

SHIPPING AND SITE PREPARATION

SHIPPING

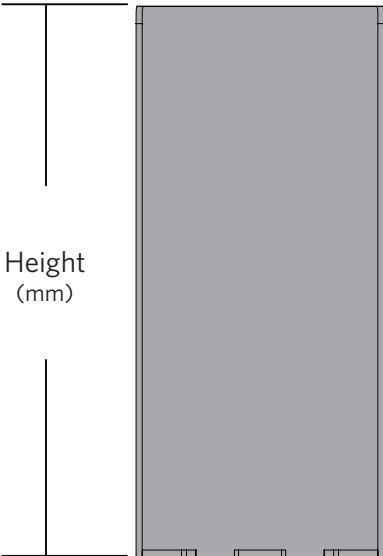
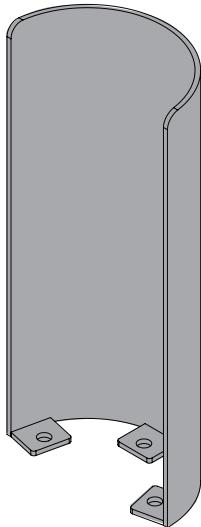
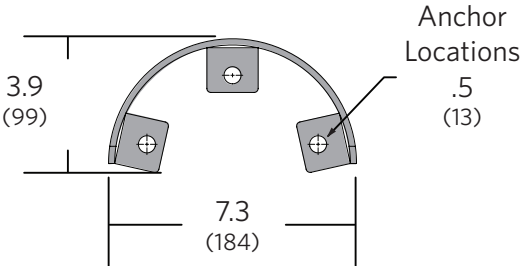
CRIs are shipped four to a box. Each CRI comes with three SB-14 expansion anchors.

SITE PREPARATION

The CRI installs on level concrete. A skilled installer should perform the installation, in consultation with the owner or end user, following safe practices and the installation guidelines that come with the product.

TECHNICAL DIMENSIONS

Dimensions are shown in inches (mm). All measurements are approximate.



Height and Weight			
Available Heights	12" (305mm)	16" (406mm)	24" (610mm)
Product Weight	7 lbs. (3.2kg)	10 lbs. (4.5 kg)	14 lbs. (6.4 kg)
Shipping Weight*	31 lbs. (11.8 kg)	41 lbs. (16.3 kg)	59 lbs. (24.5 kg)

*Shipping weight accounts for 4 CRIs and 12 anchors per box



WARRANTY

For a period of one year from the date of shipping, Alvarado will replace or repair, at Alvarado's option, any products or parts which are defective in materials or workmanship, provided recommended installation and maintenance procedures are followed. This warranty is void if damage is due to improper installation, maintenance or use. This warranty is limited to parts only, and does not cover labor or shipping charges incurred in connection with the removal or replacement of warranted products or parts.

This warranty is expressly made in lieu of any and all other warranties, expressed or implied, including, but not limited to implied warranties of merchantability and fitness for a particular purpose. Alvarado shall not be liable for any loss or damage, directly or indirectly, arising from the use of purchased products. In no event shall Alvarado be liable to buyer for consequential damages, special damages, incidental damages, loss of use, business interruption, loss of profits, or damages of any kind arising out of the use or inability to use a purchased product. In NO event shall Alvarado be liable for damages which exceed the purchase price of a covered product.