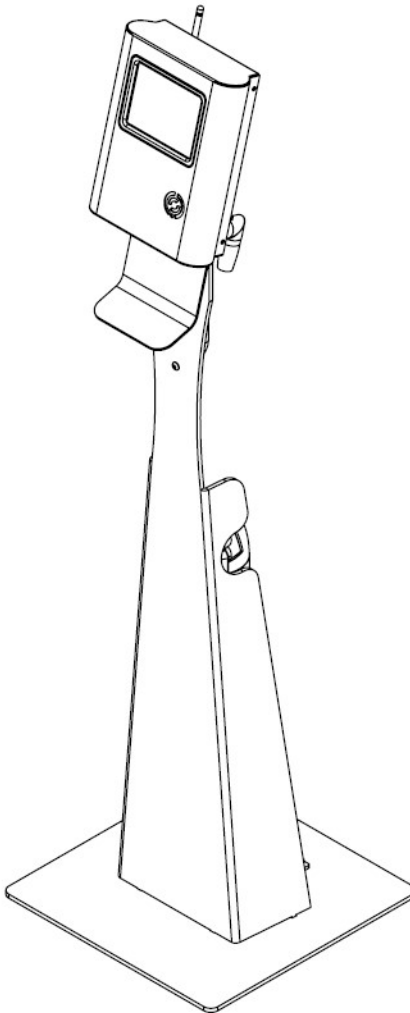


**IntraQ Pedestal Guide**  
**PUD4131R4-0 Version 3.1**





## Contents

Preface.....	3
Document Overview.....	3
Support.....	3
Uncrating the Pedestal.....	4
Tools Required.....	4
Procedure.....	4
Assembling the Pedestal.....	5
Tools Required.....	5
Procedure.....	5
Basic Functionality Test.....	7
Battery Operations.....	8
Items Required.....	8
Checking Battery Charge Level.....	8
Charging the Battery.....	9
Removing/Installing the Battery.....	10
Using the Removable Dolly.....	12
Attaching the Dolly.....	12
Removing the Dolly.....	13
Revision History.....	14



## Preface

## Document Overview

This document describes how to set up a battery-powered portable Alvarado IntraQ pedestal for first-time use.

## Support

Contact Alvarado's Entertainment Support department for any questions or comments you have about this guide or the processes it describes.

**Phone:** 909-591-8431

**Email:** [helpdesk@alvaradomfg.com](mailto:helpdesk@alvaradomfg.com)



## Uncrating the Pedestal

### Tools Required

- Drill with Phillips head bit
- Steel strapping cutters
- Box cutter or knife

### Procedure

1. Cut and remove the steel straps.
2. Use the drill to remove the screws securing the lid to the crate. Each crate can hold a maximum of three (3) pedestals, including the pedestal base, the power supply box, and the IntraQ head box as shown below.



3. Use the box cutter or knife to carefully cut away the yellow shrink wrap holding the pedestal bases in place. Remove and discard any foam packing material.
4. Remove the box containing the IntraQ head and mounting hardware.
5. Remove the pedestal base

**IMPORTANT**

Use two people to lift the pedestal base(s) out of the crate.



## Assembling the Pedestal

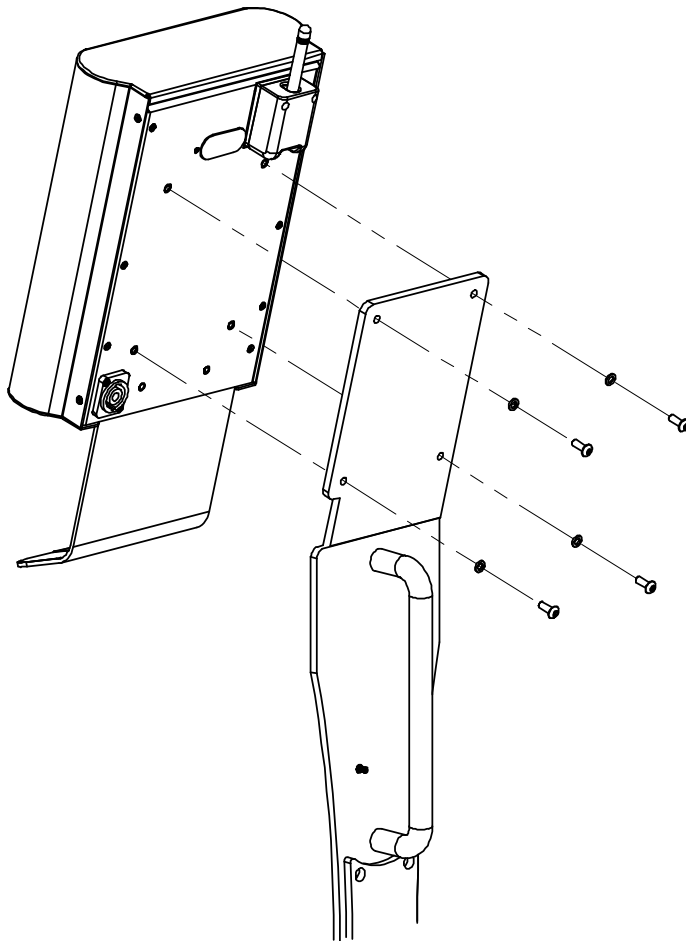
The pedestals are shipped in two pieces: the pedestal base and the IntraQ head. Follow the directions below to attach the head to the pedestal base.

### Tools Required

- Size 1/8" hex key
- Mounting hardware (included in IntraQ head box)
  - 4x button-head hex screws (91-1109)
  - 4x lock washers (91-4203)

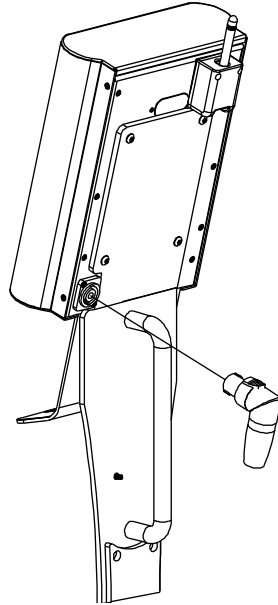
### Procedure

1. Remove the IntraQ head and mounting hardware from the box.
2. Use the 1/8" hex key to secure the head to the pedestal base.

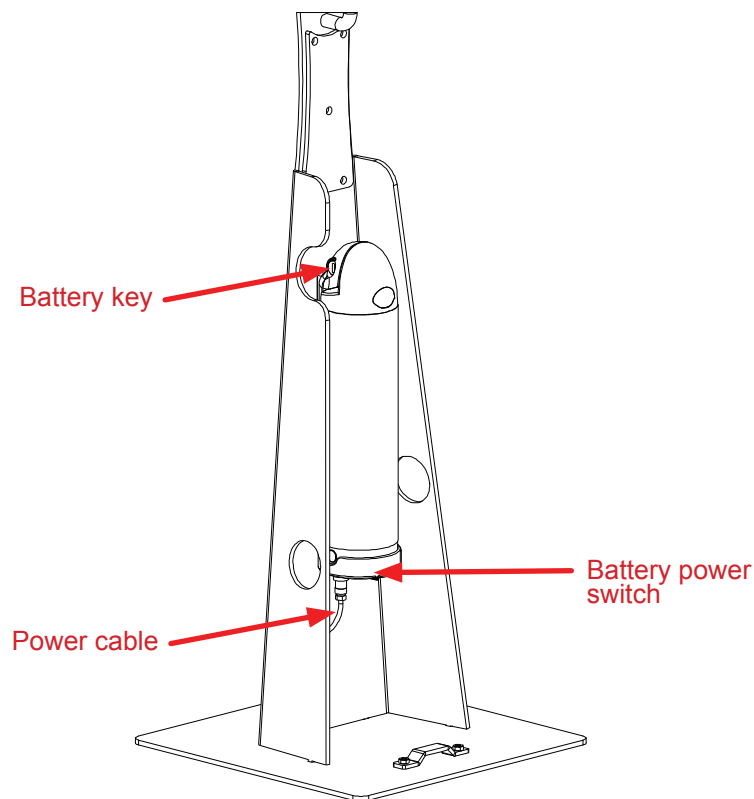




3. Connect the Neutrik connector to the back of the IntraQ head.



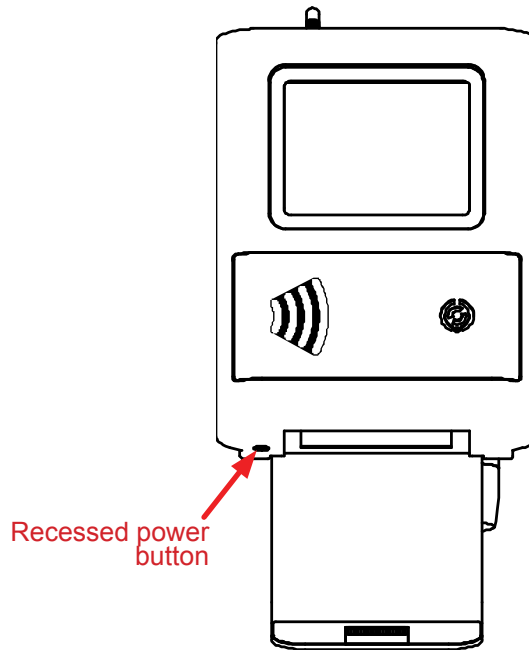
4. Verify the power cable plugging into the bottom of the battery is securely connected.
5. Verify the battery power switch (located under the battery) is set to **on**.
6. Remove the key from the battery.
7. Ensure the battery is securely latched in the bracket.





## Basic Functionality Test

After setting up the pedestal, press the **recessed power button** and verify the IntraQ powers on. If it does not power on, check the following items.



- Verify the power cable is plugged into the back of the IntraQ head.
- Verify the battery cable is plugged into the bottom of the battery.
- Verify the battery is switched on.
- Press the power button on the battery to verify it is charged (see next section). Charge the battery if required.



## Battery Operations

### Items Required

- Battery key
- Replacement battery

### Checking Battery Charge Level

Press the gray charge level display button on the battery to display the current charge level of the battery. A new, fully charged battery should be able to allow continuous pedestal operation for up to 18 hours. The maximum time the battery can power the pedestal will decrease as the battery ages.



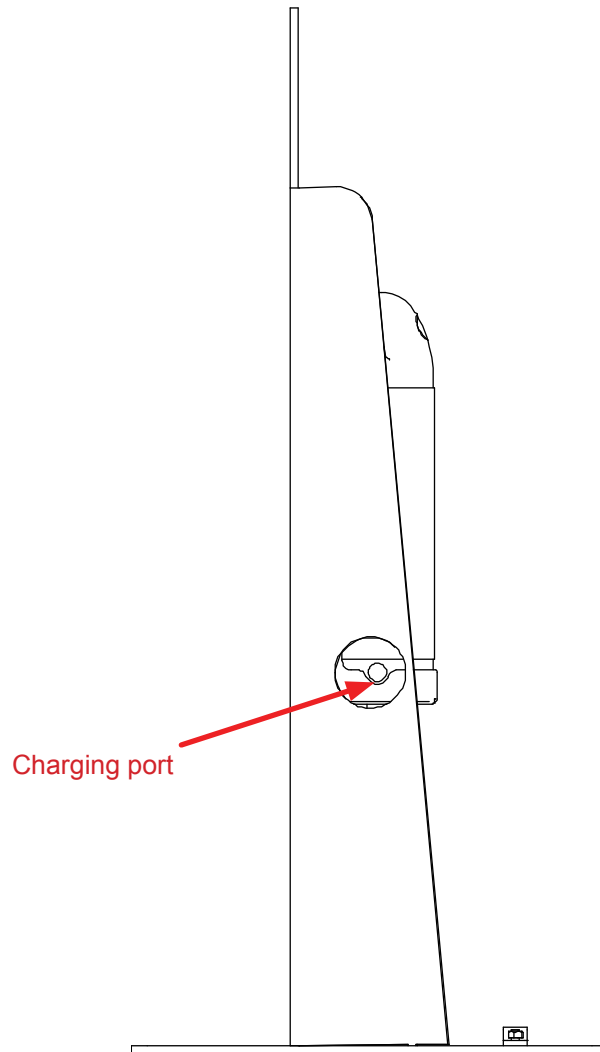




## Charging the Battery

The charger is in the power supply box. It should take about three hours to fully charge a new battery.

1. Plug the charger into power.
2. Connect the socket to the battery's charging port.



(Shown with the printer box open from the right-hand side.)



## Removing/Installing the Battery

To remove the battery:

1. Press the button on the connector to separate it. Each half of the connector is keyed, so it will only reattach one way when you replace the battery.
2. Use the battery key to detach the battery from the bracket. You don't need to use the key when reattaching the battery.
3. Tilt the battery away from the pedestal and lift the battery out of the bracket. Care should be taken when pulling the battery cable through the bottom hole of the holding bracket to prevent scraping and/or catching.





To remove the battery:

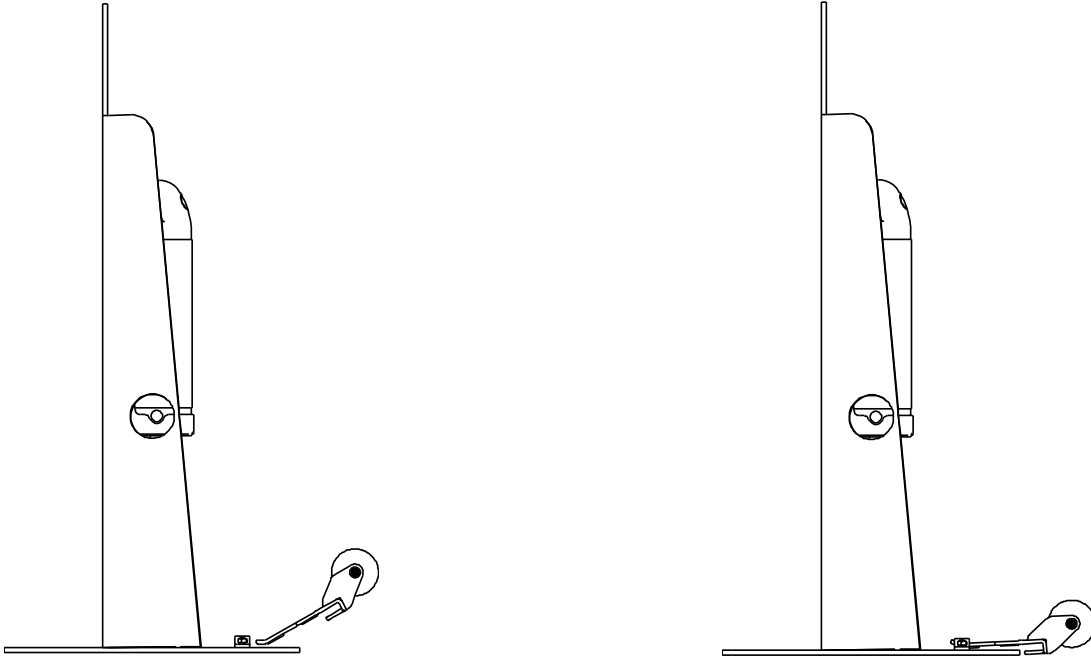
1. Place the bottom of the battery in the frame. The cutout section of the top of the battery should be facing the pedestal.
2. Tilt the top of the battery toward the pedestal until the locking latch clicks.
3. Reconnect the quick-connect cable ends.



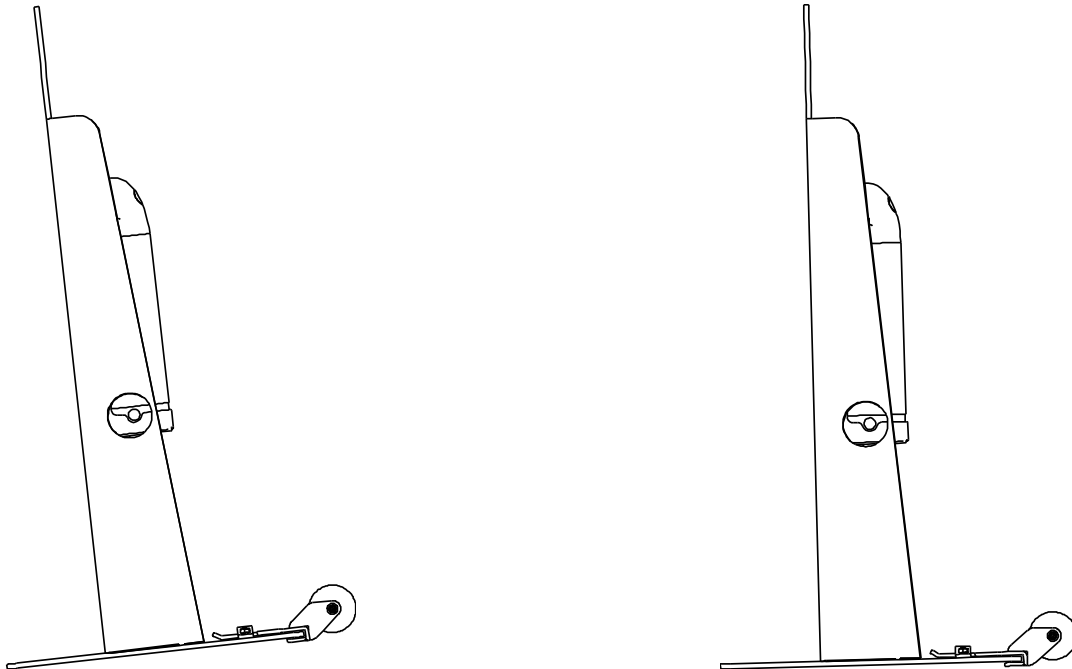
## Using the Removable Dolly

### Attaching the Dolly

1. Tilt the dolly up and slide the tab into the guide on the baseplate.

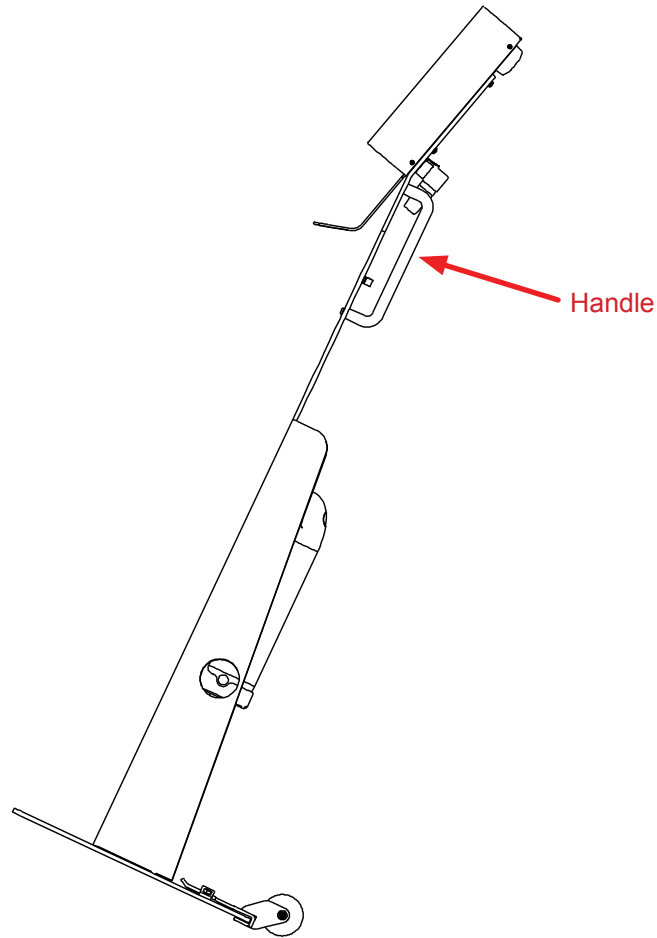


2. Lean the IntraQ pedestal forward so the back of the baseplate is about half an inch off the floor.
3. Tilt the dolly down so the groove in the dolly fits over the baseplate.





4. Use the handle on the pedestal base to lean the IntraQ pedestal back onto the dolly's wheels and push/pull it to its desired location.



### Removing the Dolly

1. Lean the IntraQ pedestal forward so the dolly's wheels are off the ground.
2. Pull the dolly out until the bent tab on the dolly touches the guide on the baseplate.
3. Tilt the dolly up and slide the tab out of the guide



## Revision History

Revision	Date	Author	Revision History/Description
1.0	9/21/2017	D Bohannon	Original Document
2.0	5/1/2019	D Bohannon	Updated for IntraQ hardware changes.
3.0	9/4/2020	D Bohannon	Updated images to V3. Added information about quick-connect cable.
3.1	5/10/2021	D Bohannon	Minor edits.



**Alvarado Manufacturing Company, Inc.**  
12660 Colony Street, Chino, CA 91710  
Telephone: (909) 591-8431  
Fax: (909) 628-1403  
support@alvaradomfg.com  
www.alvaradomfg.com