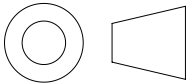



THIRD ANGLE PROJECTION



PROPRIETARY AND CONFIDENTIAL

THE INFORMATION CONTAINED IN THIS DRAWING IS THE SOLE PROPERTY OF ALVARADO MANUFACTURING INC. ANY REPRODUCTION IN PART OR AS A WHOLE WITHOUT THE WRITTEN PERMISSION OF ALVARADO MANUFACTURING INC. IS PROHIBITED.

DO NOT SCALE DRAWING

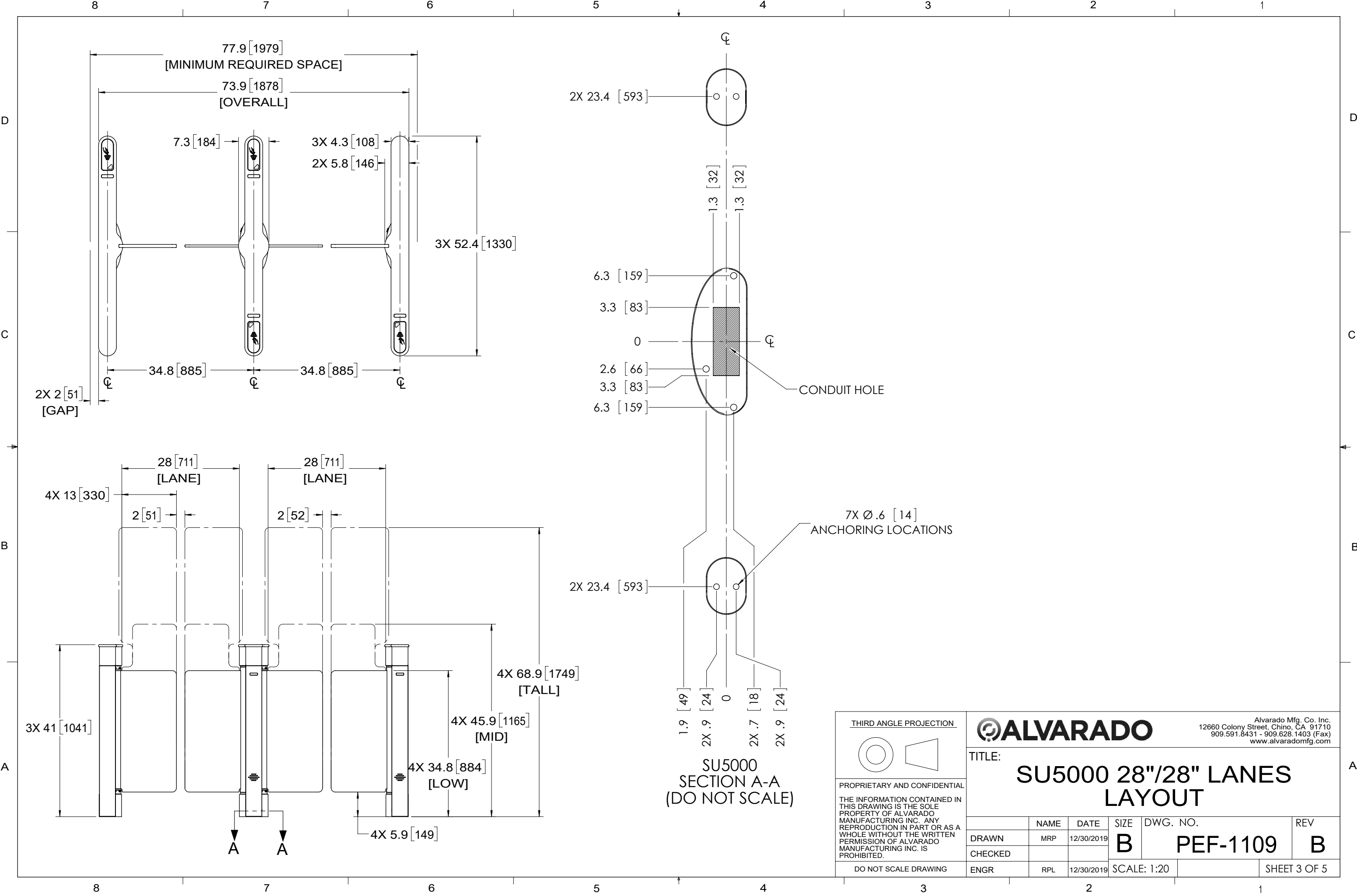


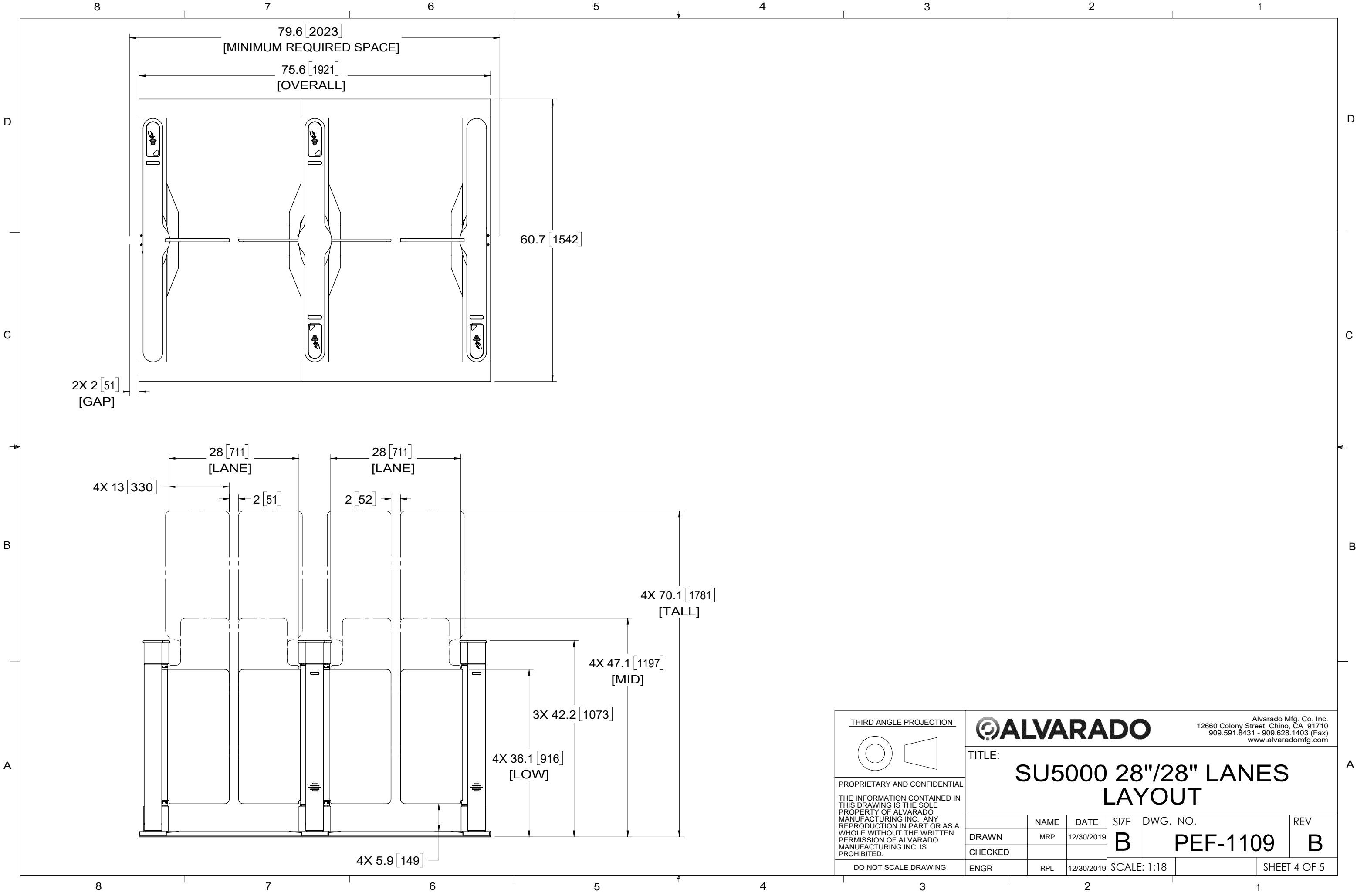
Alvarado Mfg. Co. Inc.
12660 Colony Street, Chino, CA 91710
909.591.8431 • 909.628.1403 (Fax)
www.alvaradomfg.com

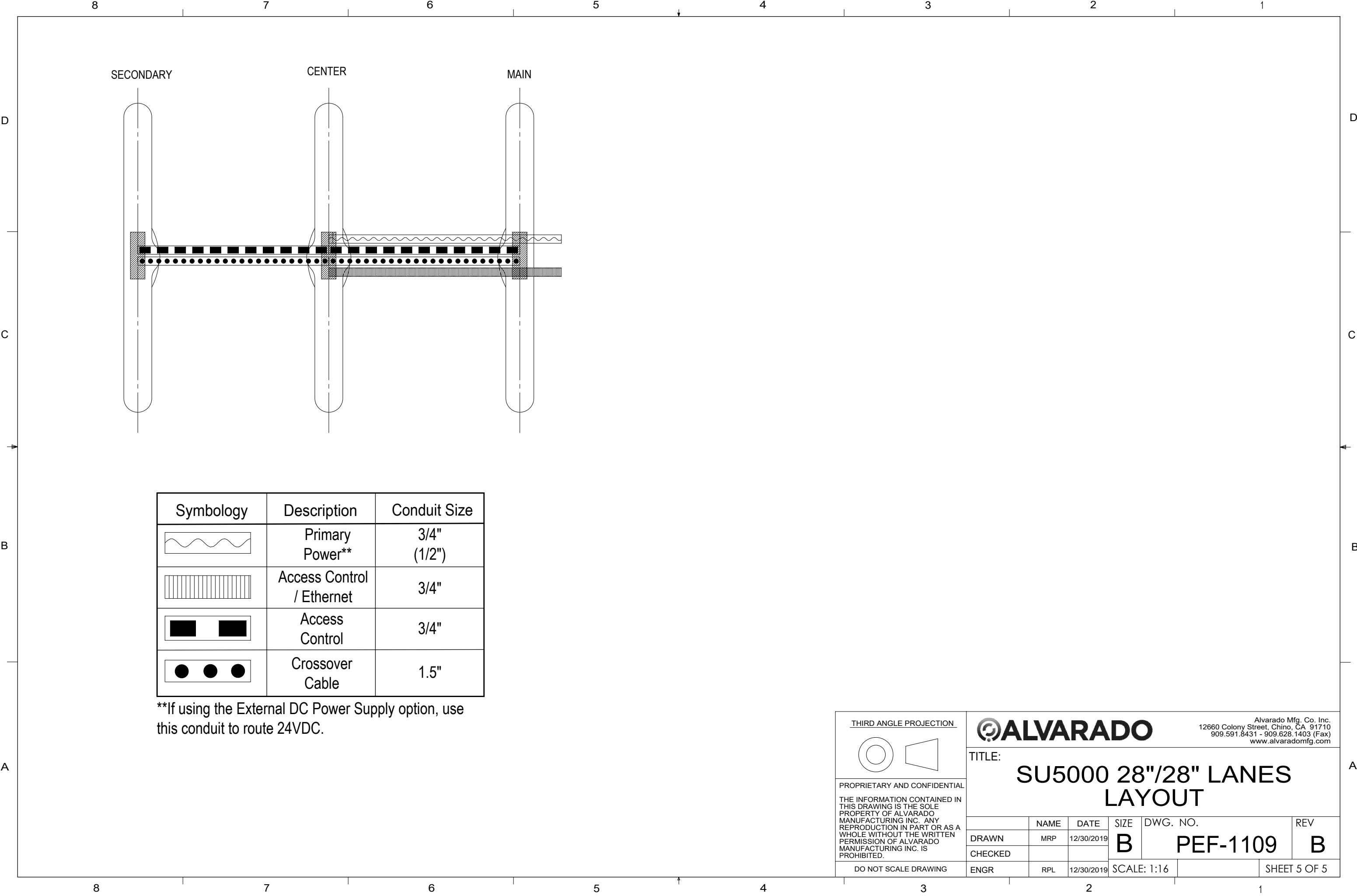
TITLE:

SU5000 28"/28" LANES LAYOUT

	NAME	DATE	SIZE	DWG. NO.	REV
DRAWN	MRP	12/30/2019	B	PEF-1109	B
CHECKED					
ENGR	RPL	12/30/2019	SCALE: 1:22		SHEET 2 OF 5







Symbology	Description	Conduit Size
	Primary Power**	3/4" (1/2")
	Access Control / Ethernet	3/4"
	Access Control	3/4"
	Crossover Cable	1.5"

**If using the External DC Power Supply option, use this conduit to route 24VDC.

THIRD ANGLE PROJECTION

PROPRIETARY AND CONFIDENTIAL

THE INFORMATION CONTAINED IN THIS DRAWING IS THE SOLE PROPERTY OF ALVARADO MANUFACTURING INC. ANY REPRODUCTION IN PART OR AS A WHOLE WITHOUT THE WRITTEN PERMISSION OF ALVARADO MANUFACTURING INC. IS PROHIBITED.

DO NOT SCALE DRAWING

Alvarado Mfg. Co. Inc.
12660 Colony Street, Chino, CA 91710
909.591.8431 - 909.628.1403 (Fax)
www.alvaradomfg.com

TITLE:

SU5000 28"/28" LANES LAYOUT

	NAME	DATE	SIZE	DWG. NO.	REV
DRAWN	MRP	12/30/2019	B	PEF-1109	B
CHECKED					
ENGR	RPL	12/30/2019	SCALE: 1:16		SHEET 5 OF 5