

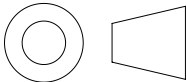
APPROVED BY: _____

DATE: _____

NOTES:

- 1. ALL DIMENSIONS ARE APPROXIMATE AND IN INCHES [mm].
- 2. ALVARADO RECOMMENDS 28" WIDTH LANES BE USED FOR GENERAL PURPOSE ENTRY/EXIT CONTROL.
ALVARADO RECOMMENDS 36" WIDTH LANES BE RESERVED FOR USE BY PATRONS WITH SPECIAL REQUIREMENTS.


THIRD ANGLE PROJECTION



PROPRIETARY AND CONFIDENTIAL

THE INFORMATION CONTAINED IN THIS DRAWING IS THE SOLE PROPERTY OF ALVARADO MANUFACTURING INC. ANY REPRODUCTION IN PART OR AS A WHOLE WITHOUT THE WRITTEN PERMISSION OF ALVARADO MANUFACTURING INC. IS PROHIBITED.

DO NOT SCALE DRAWING

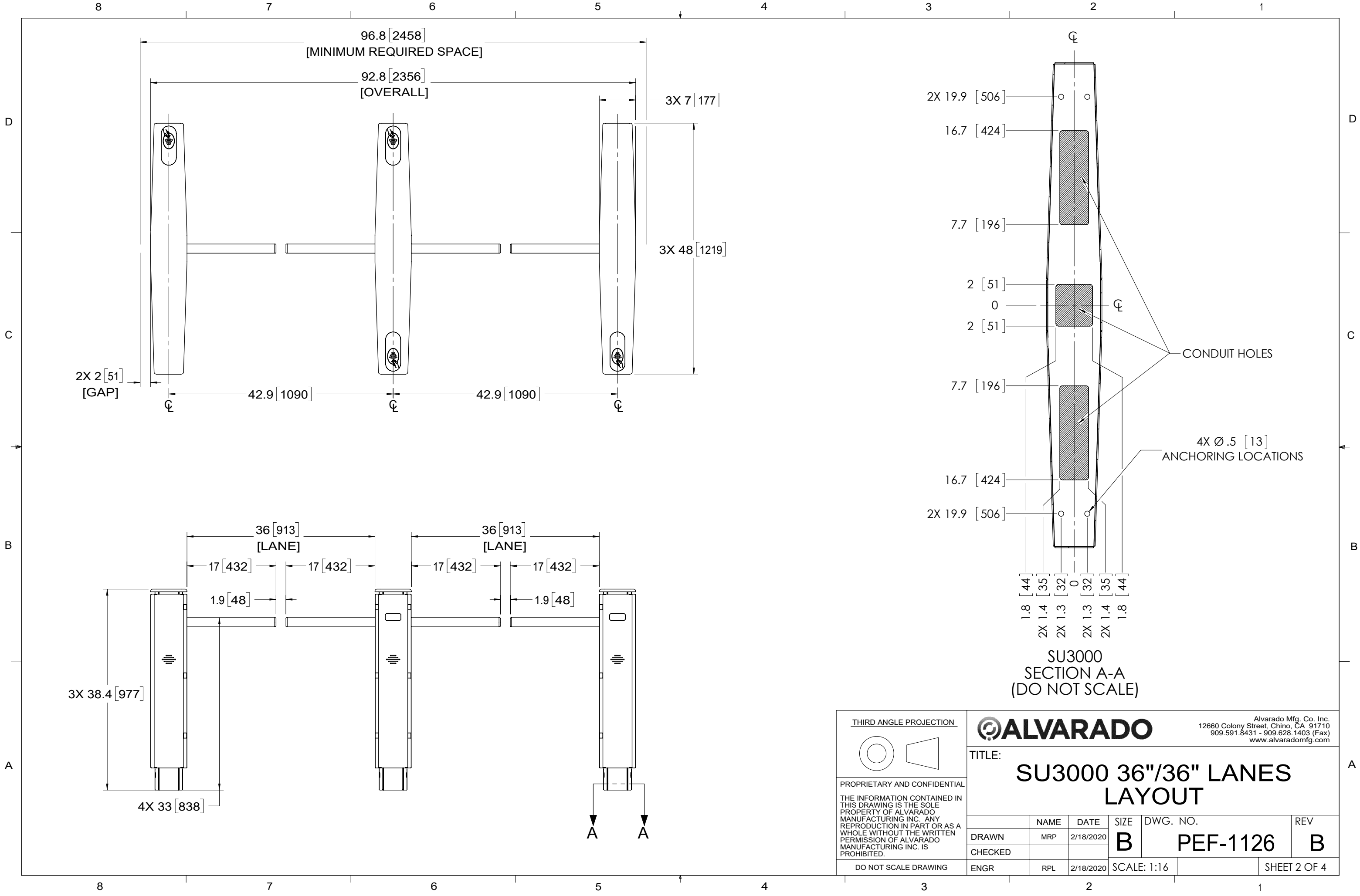


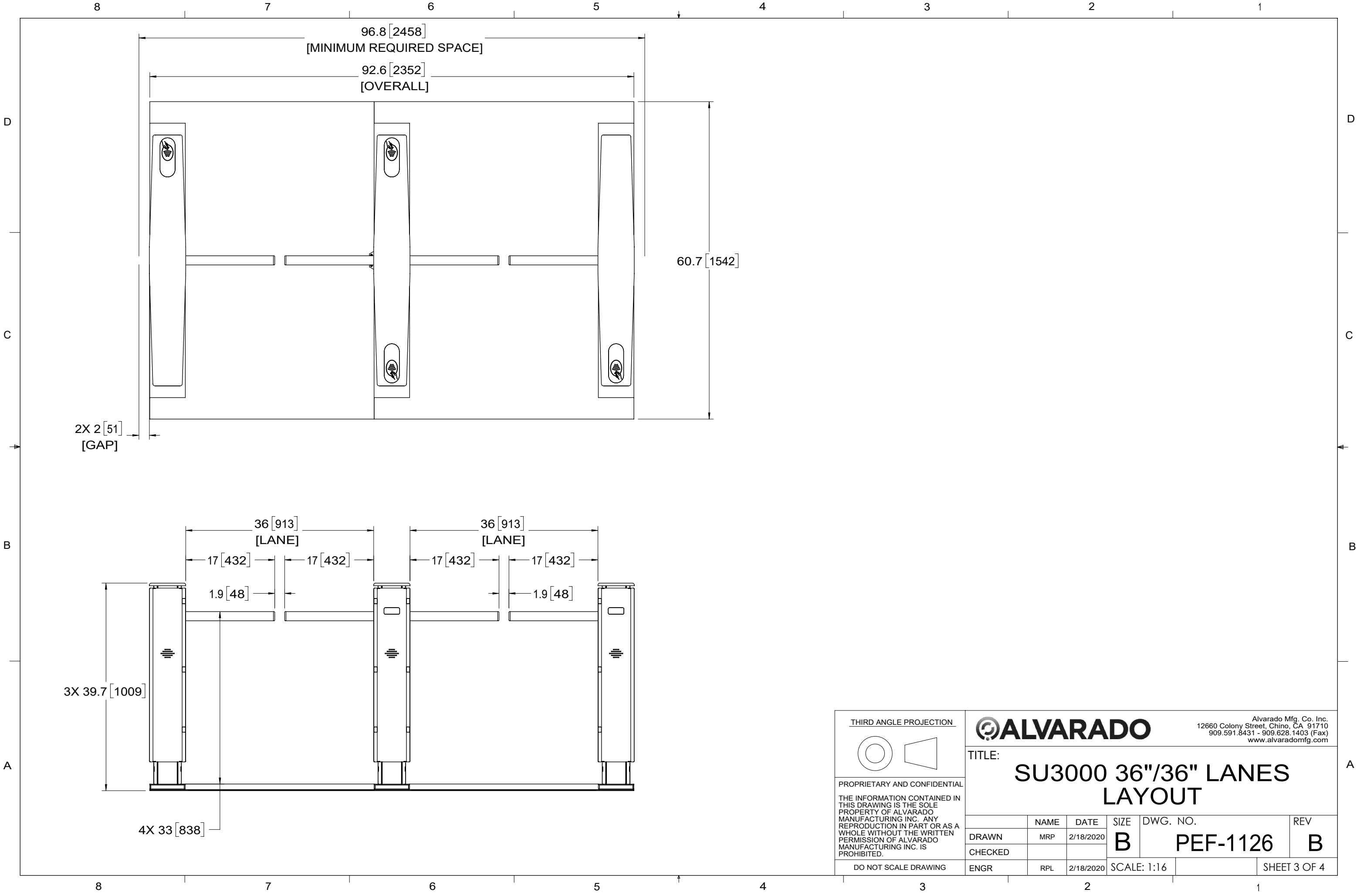
Alvarado Mfg. Co. Inc.
12660 Colony Street, Chino, CA 91710
909.591.8431 • 909.628.1403 (Fax)
www.alvaradomfg.com

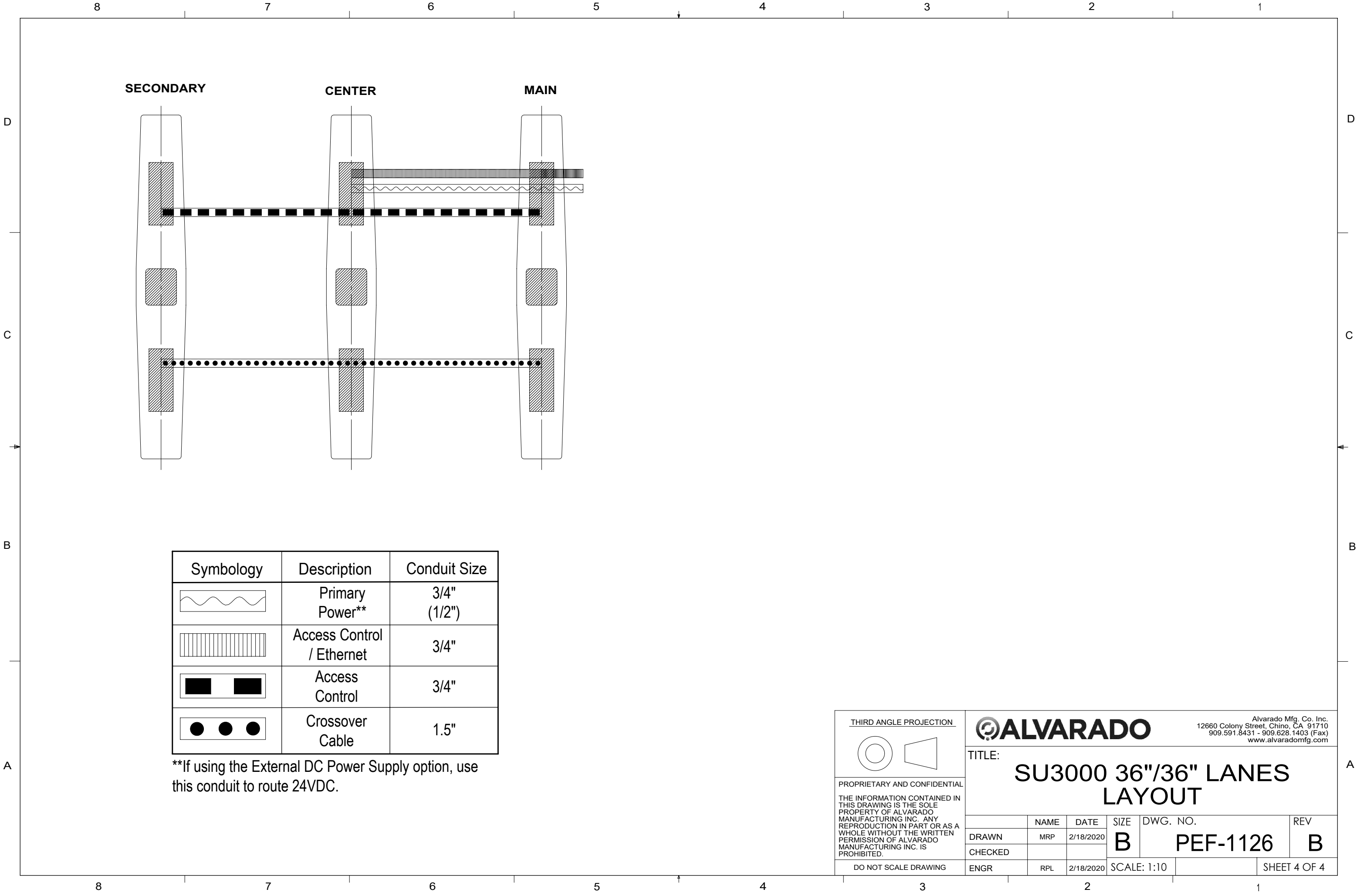
TITLE:

SU3000 36"/36" LANES LAYOUT

	NAME	DATE	SIZE	DWG. NO.	REV
DRAWN	MRP	2/18/2020	B	PEF-1126	B
CHECKED					
ENGR	RPL	2/18/2020	SCALE: 1:18		SHEET 1 OF 4







Symbology	Description	Conduit Size
	Primary Power**	3/4" (1/2")
	Access Control / Ethernet	3/4"
	Access Control	3/4"
	Crossover Cable	1.5"

**If using the External DC Power Supply option, use this conduit to route 24VDC.

THIRD ANGLE PROJECTION

PROPRIETARY AND CONFIDENTIAL

THE INFORMATION CONTAINED IN THIS DRAWING IS THE SOLE PROPERTY OF ALVARADO MANUFACTURING INC. ANY REPRODUCTION IN PART OR AS A WHOLE WITHOUT THE WRITTEN PERMISSION OF ALVARADO MANUFACTURING INC. IS PROHIBITED.

DO NOT SCALE DRAWING

Alvarado Mfg. Co. Inc.
12660 Colony Street, Chino, CA 91710
909.591.8431 • 909.628.1403 (Fax)
www.alvaradomfg.com

TITLE:

SU3000 36"/36" LANES LAYOUT

	NAME	DATE	SIZE	DWG. NO.	REV
DRAWN	MRP	2/18/2020	B	PEF-1126	B
CHECKED					
ENGR	RPL	2/18/2020	SCALE: 1:10		SHEET 4 OF 4