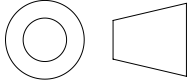


APPROVED BY: _____

DATE: _____

- NOTES:
- 1. ALL DIMENSIONS ARE APPROXIMATE AND IN INCHES [mm].
 - 2. ALVARADO RECOMMENDS 28" WIDTH LANES BE USED FOR GENERAL PURPOSE ENTRY/EXIT CONTROL.
ALVARADO RECOMMENDS 36" WIDTH LANES BE RESERVED FOR USE BY PATRONS WITH SPECIAL REQUIREMENTS.


THIRD ANGLE PROJECTION



PROPRIETARY AND CONFIDENTIAL

THE INFORMATION CONTAINED IN THIS DRAWING IS THE SOLE PROPERTY OF ALVARADO MANUFACTURING INC. ANY REPRODUCTION IN PART OR AS A WHOLE WITHOUT THE WRITTEN PERMISSION OF ALVARADO MANUFACTURING INC. IS PROHIBITED.

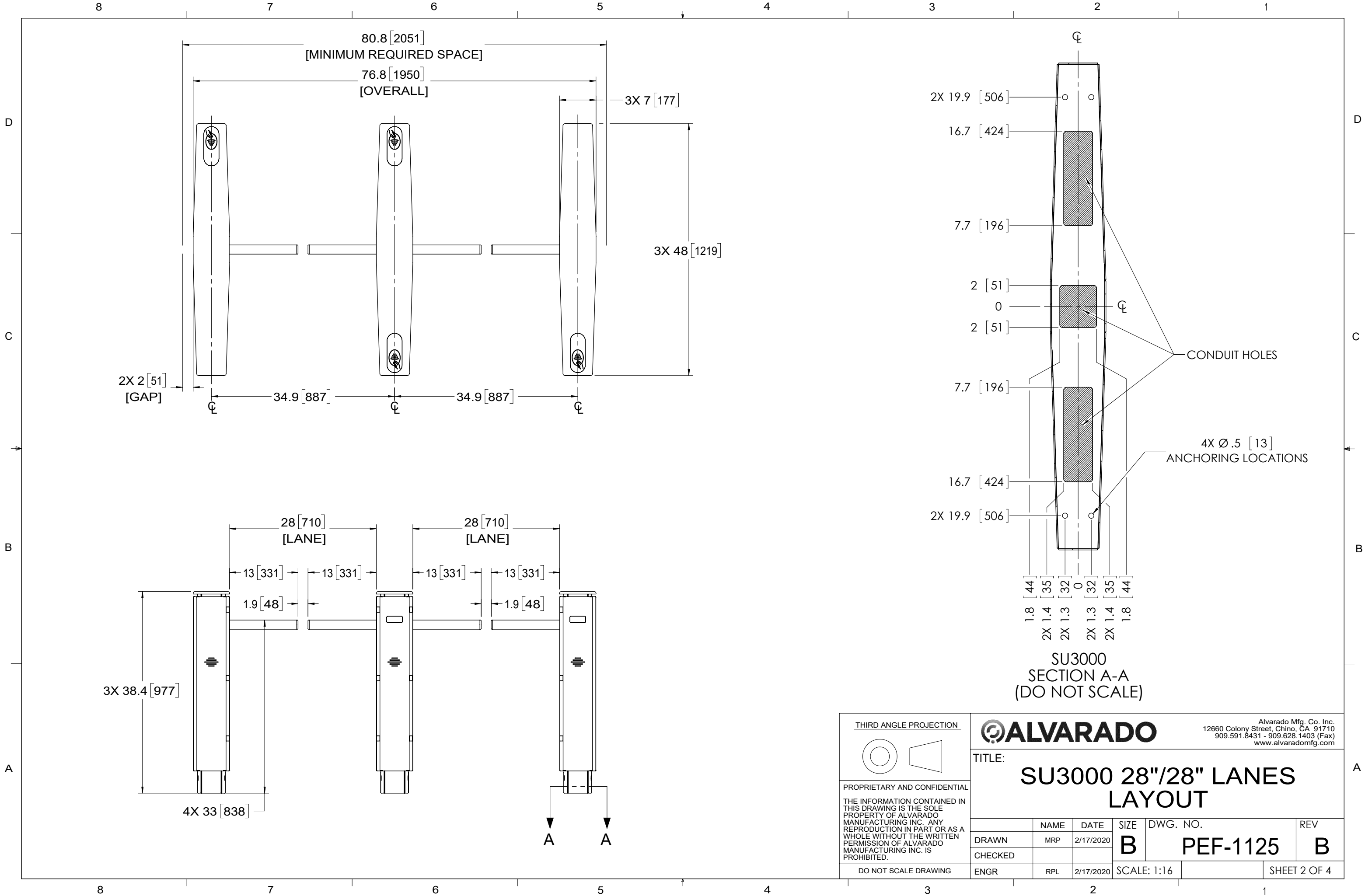
DO NOT SCALE DRAWING

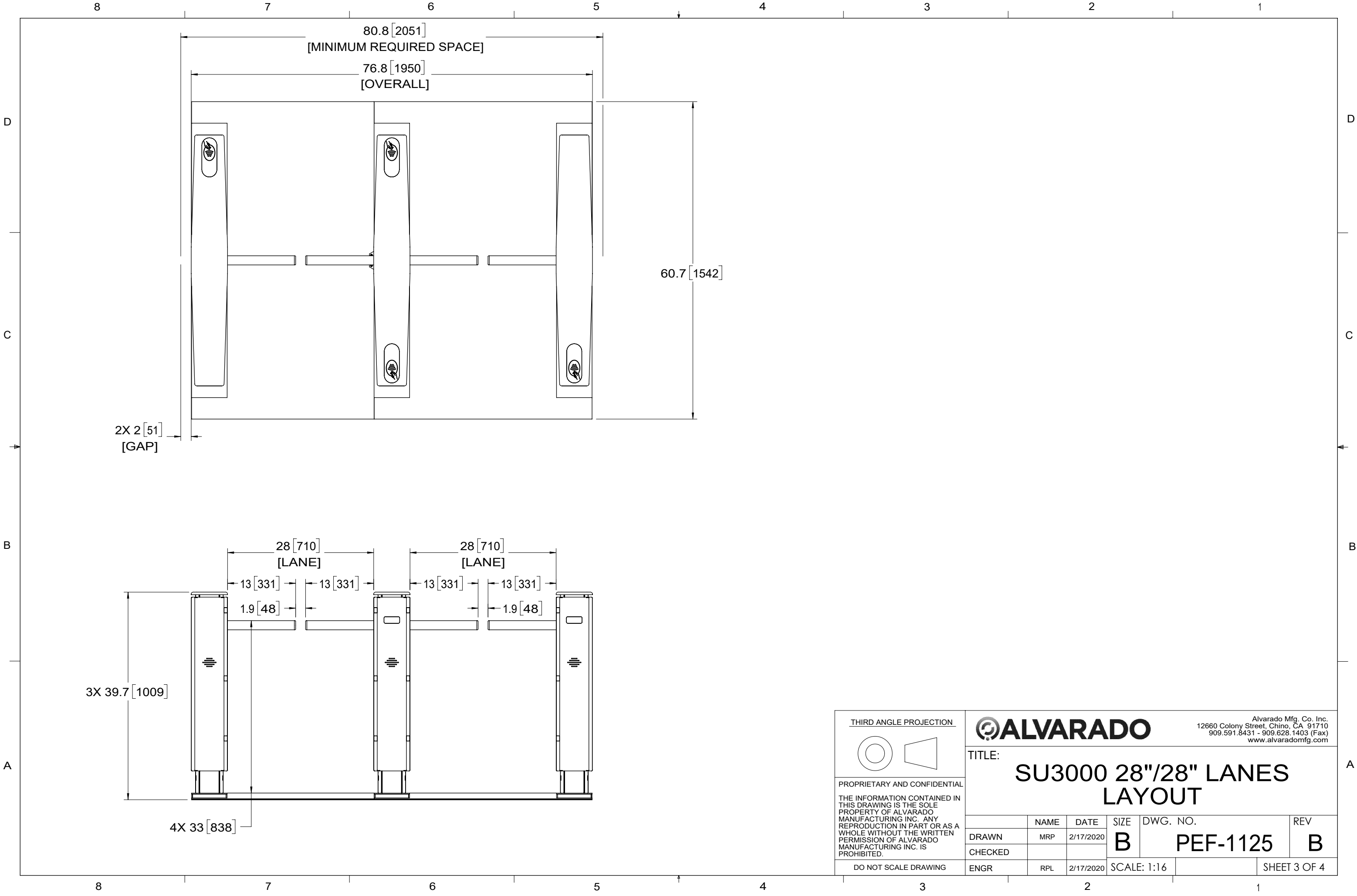


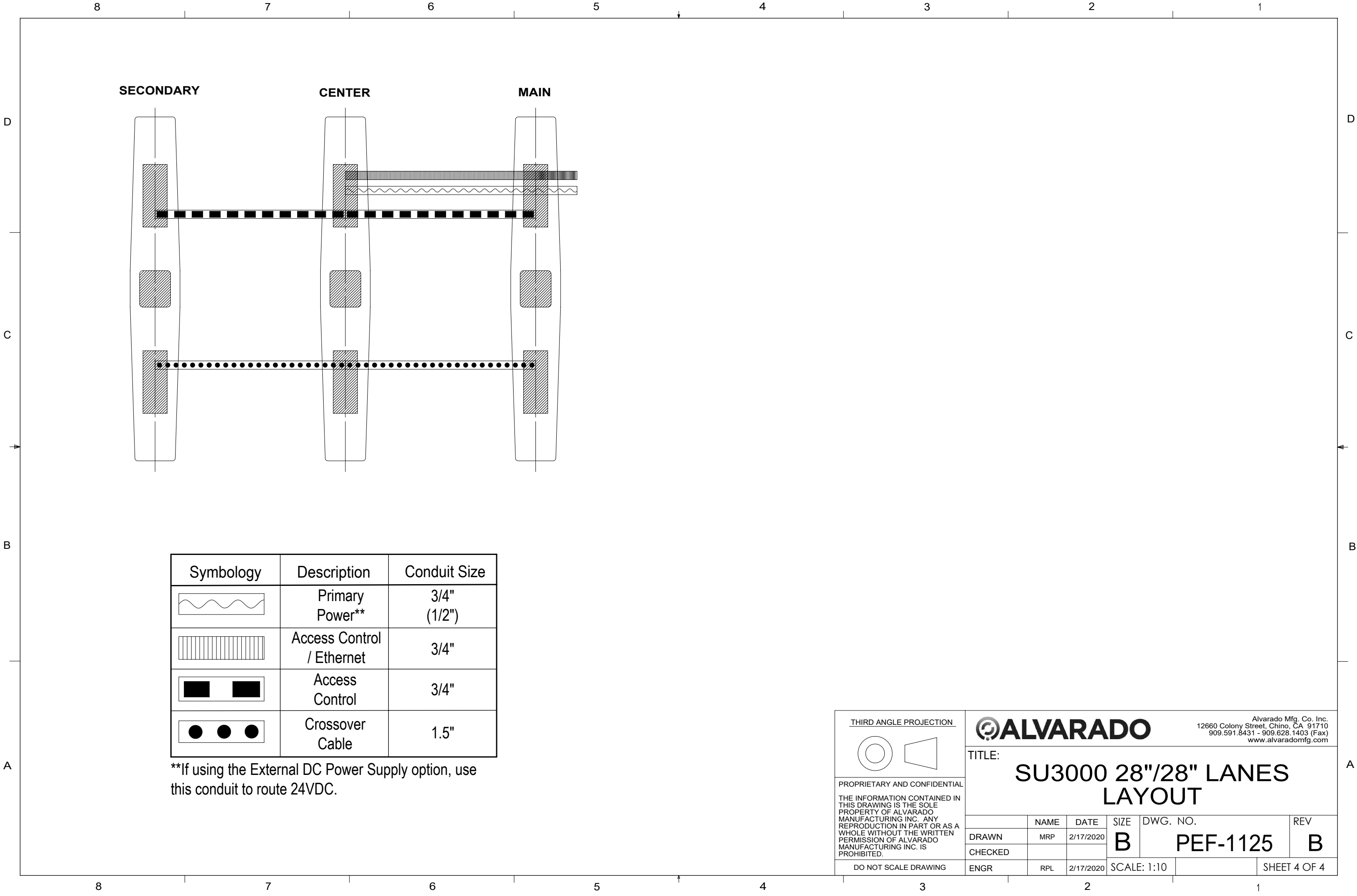
Alvarado Mfg. Co. Inc.
12660 Colony Street, Chino, CA 91710
909.591.8431 - 909.628.1403 (Fax)
www.alvaradomfg.com

TITLE:
SU3000 28"/28" LANES LAYOUT

| | | | | | |
|---------|------|-----------|-------------|-----------------|--------------|
| | NAME | DATE | SIZE | DWG. NO. | REV |
| DRAWN | MRP | 2/17/2020 | B | PEF-1125 | B |
| CHECKED | | | | | |
| ENGR | RPL | 2/17/2020 | SCALE: 1:18 | | SHEET 1 OF 4 |








THIRD ANGLE PROJECTION

PROPRIETARY AND CONFIDENTIAL

THE INFORMATION CONTAINED IN THIS DRAWING IS THE SOLE PROPERTY OF ALVARADO MANUFACTURING INC. ANY REPRODUCTION IN PART OR AS A WHOLE WITHOUT THE WRITTEN PERMISSION OF ALVARADO MANUFACTURING INC. IS PROHIBITED.

DO NOT SCALE DRAWING



Alvarado Mfg. Co. Inc.
12660 Colony Street, Chino, CA 91710
909.591.8431 • 909.628.1403 (Fax)
www.alvaradomfg.com

TITLE:

SU3000 28"/28" LANES LAYOUT

| | NAME | DATE | SIZE | DWG. NO. | REV |
|---------|------|-----------|-------------|----------|--------------|
| DRAWN | MRP | 2/17/2020 | B | PEF-1125 | B |
| CHECKED | | | | | |
| ENGR | RPL | 2/17/2020 | SCALE: 1:10 | | SHEET 4 OF 4 |