

With over 50 years of experience in pedestrian queuing, access control and perimeter security, Alvarado is uniquely qualified to provide the best solutions for your turnstile and pedestrian counting needs.

Alvarado manufactures America's finest turnstiles and counting equipment. Our EDC and SU500 counting optical turnstiles are installed in thousands of facilities worldwide, including hundreds of America's best known entertainment venues.

For customers who want more than counting hardware, Alvarado has high level software that provides instant entry, in facility numbers and a complete database of entry information. Most importantly we integrate the software seamlessly with our turnstiles.

Whether you're looking for counting turnstiles or a complete turnkey system, Alvarado offers the products, solutions and the support you need.



SU500 Optical Turnstile

GATEWATCH Facility Counting Software

Facility	Description	Status	Entry	Exit
Facility/Main Gates				
	NORTH ENTRANCE	●	3399	175
	SOUTH ENTRANCE	●	7711	7
	WEST ENTRANCE	●	1815	25
In Facility Counts				
	ATTRACTION B	●	339	209
	ATTRACTION A	●	1847	343
	FOOD COURT	●	2899	445
	RETAIL CORRIDOR	●	3246	582

Facility Selection	Entry	Exit	In	%
Facility/Main Gates	12625	207	12718	25%
In Facility Counts	8331	1579	6752	13%
Total All Facilities	21256			

EDC Bullnose Turnstile



GWCB-10 CONTROLLER

MAIN OFFICE:

Alvarado Manufacturing Company
12660 Colony Street
Chino, CA 91710

CONTACTS:

Phone:
U.S.Toll Free: (800) 423-4143
Tel: Inter: +1 (909) 591-8431
Fax: (909) 628-1403



EDC

Alvarado's EDC waist high turnstiles are the perfect choice for high volume counting applications.

The EDC is America's premier waist high turnstile. It has a super smooth rotation, a very comfortable patron passage width and superior styling.

When power is available, electric models (the EDCX) detect turnstile rotations using opto-interrupters, which are small LED's that detect each rotation and provide highly accurate counting. This feature eliminates the need for contact mechanical microswitches which require periodic adjustment.

For installations where power is not used, the EDC can detect turnstile rotations using a mechanical microswitch.

With either count detection option, counts are output to a local digital counter installed in the turnstile cabinet and/or to GateWatch facility counting software. Local counters can be either resettable or non-resettable.

EDC FEATURES

- Stainless steel internal components
- Streamlined design with no visible bolts or fasteners
- Hydraulically dampened arm rotation
- Available in color powder coat and stainless steel finishes

CONTACTS:

Phone:
U.S. toll free: (800) 423-4143
Tel: (909) 591-8431
Fax: (909) 628-1403
www.alvaradomfg.com
email: info@alvaradomfg.com

Alvarado's EDC waist high turnstiles feature superior styling and a smooth, hydraulically dampened arm rotation.

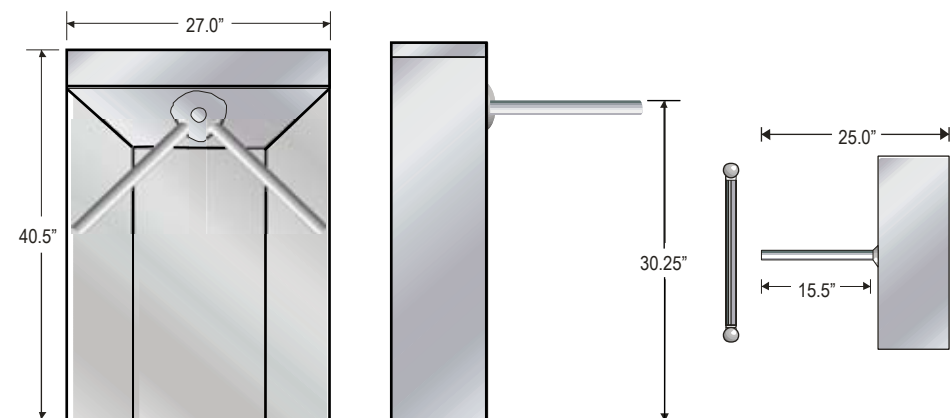
In addition to the standard model EDC shown, here, Alvarado also offers the EDC in a sleek, "Bullnose" style. (Shown on pg.1)

EDC and EDC Bullnose turnstiles are available with manual or electric operation, and can also be ordered as an Extended Model, with longer arms and extended cabinets.

Units can also be ordered with resettable or non-resettable local counters installed in the turnstile cabinet.



Standard EDC Dimensions



SUPERVISOR 500

Optical Counting Turnstiles

Alvarado's Supervisor 500 series barrier-free optical turnstiles offer extreme reliability and provide highly accurate patron counts.

Our Supervisor 500 optical turnstiles use multiple infrared sensors to detect and count people entering or leaving a facility or area.

The SU500 can differentiate between people, and objects that shouldn't be counted, such as umbrellas, bags or walkers.

The multiple sensors within the turnstile not only detect the direction of travel, but also quick or slow moving patrons, and tailgate entry attempts.

Because they are barrier-free, Supervisor 500 optical turnstiles have a higher throughput than conventional turnstiles.

The standard recommended passage width is 26".

A 36" passage width configuration is also available to accommodate strollers and wheelchairs. Consult with Alvarado regarding your application if you intend to use a 36" width SU500.

SU500 turnstiles have been approved by a number of state gaming commissions for use on riverboat casinos.



SU500
Multi-lane
Configuration



SU500
Portable
Single lane
Configuration

Portable models come with power and communication ports included on both sides of the turnstile to make it easy to daisy chain multiple units.



CONTACTS:

Phone:
U.S. toll free: (800) 423-4143
Tel: (909) 591-8431
Fax: (909) 628-1403

www.alvaradomfg.com
email: info@alvaradomfg.com

SUPERVISOR 500 INSTALLATION OPTIONS

- Available in single or multi-lane configurations with shared center cabinets installed into solid flooring or concrete
- Single lane units on portable base plate with ports for power/communication

Alvarado's standard SU500 is designed for indoor use, or protected outdoor use with a weatherization package. Cabinets are available in satin stainless steel or color powder coat finishes.



PEDESTRIAN COUNTING SOFTWARE

ALVARADO

alvaradomfg.com

4

GATEWATCH™

Alvarado's newly released GateWatch 7.3 is a scalable, Windows based software program that provides real-time computerized patron counts for entertainment venues and other facilities. It is compatible with Alvarado's EDC turnstiles and Supervisor 500 optical counting turnstiles.

GateWatch stores all count information by date and time, and provides a number of standard reports and graphs.

HOW IT WORKS

Regular or optical turnstiles are connected to a GWCB controller. As patrons pass through the turnstile, a "count" signal is sent to the controller, which communicates the count to the GateWatch server located on your existing Ethernet network.

GateWatch stores each count and refreshes the on-screen display to provide a real time snapshot of facility activity.

If existing patrons are counted, GateWatch can provide real time in facility counts - letting you know how many patrons are in your facility at any point of time.

GateWatch has many powerful standard features, such as the ability to export count information in ASCII format, as often as every minute, to any defined location. This allows users to create custom reports using standard Windows spreadsheet and database programs. The program can also send counts to other devices on existing networks.

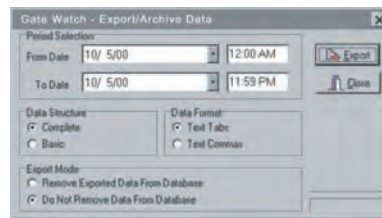
CONTACTS:

Phone:
U.S. toll free: (800) 423-4143
Tel: (909) 591-8431
Fax: (909) 628-1403
www.alvaradomfg.com
email: info@alvaradomfg.com

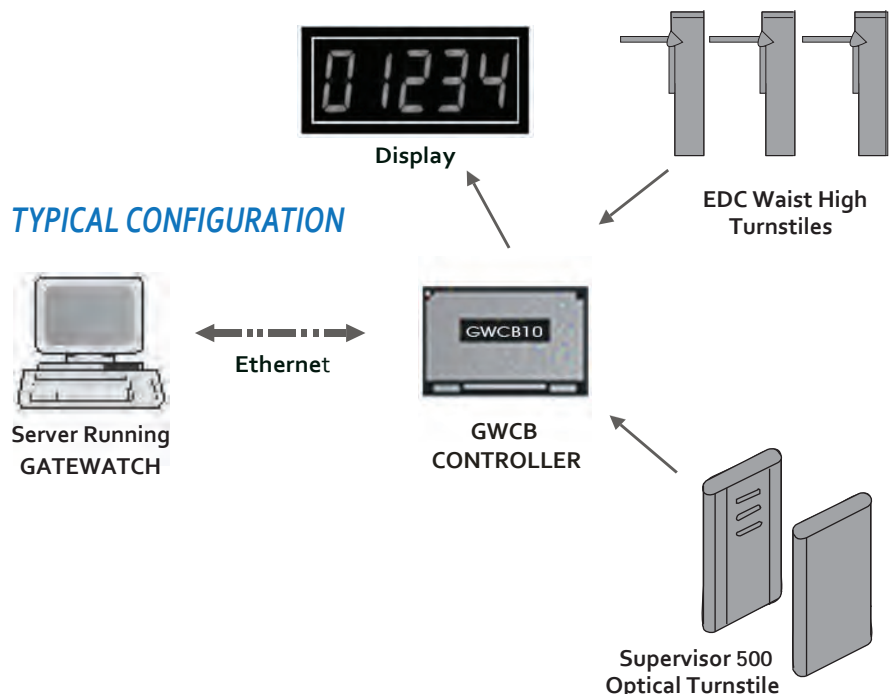
Cluster	Description	Status	Entry	Exit
NORTH ENTRANCE				
EDC 01		⊕	886	23
EDC 02		⊕	524	129
EDC 03		⊕	1200	9
EDC 04		⊕	789	14
SOUTH ENTRANCE				
EDC 05		⊕	1470	5
EDC 06		⊕	917	
EDC 07		⊕	2105	2
EDC 08		⊕	3219	
WEST ENTRANCE				
SUS00-01		⊕	489	
SUS00-02		⊕	1326	25
ATTRACTION B				
SLT 03		⊕	125	112
SLT 04		⊕	214	97
ATTRACTION A				
SLT 01		⊕	798	127
SLT 02		⊕	1049	216
FOOD COURT				
OPS 01		⊕	1350	124
OPS 02		⊕	1549	321
RETAIL CORRIDOR				
TAS 01		⊕	1789	231
TAS 02		⊕	1457	351

Cluster Totals	Entry	Exit	In	%
NORTH ENTRANCE	3399	175	3224	107%
SOUTH ENTRANCE	7711	7	7704	96%
WEST ENTRANCE	1515	25	1490	17%
ATTRACTION B	339	209	130	4%
ATTRACTION A	1947	343	1504	50%
FOOD COURT	2899	445	2454	81%
RETAIL CORRIDOR	3246	582	2664	88%
Total All	21256	1786	19470	19%

GateWatch provides real-time entry/exit counts, so you'll always know how many people are currently in your facility. The program also breaks down counts by facility, gate or location.



In addition to standard reports, data can easily be exported as a standard ASCII file.



Protecting assets and controlling the flow of people

