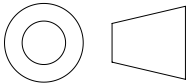


NOTES:

- 1. ALL DIMENSIONS ARE APPROXIMATE AND IN INCHES [mm].
- 2. ALVARADO RECOMMENDS 25.6" WIDTH LANES BE USED FOR GENERAL PURPOSE ENTRY/EXIT CONTROL. ALVARADO RECOMMENDS 36" WIDTH LANES BE RESERVED FOR USE BY PATRONS WITH SPECIAL REQUIREMENTS.
- 3. MULTIPLE BARRIER SIZES SHOWN FOR ILLUSTRATION ONLY. CUSTOMER TO CHOOSE BARRIER HEIGHT PER ORDER.

THIRD ANGLE PROJECTION



PROPRIETARY AND CONFIDENTIAL

THE INFORMATION CONTAINED IN THIS DRAWING IS THE SOLE PROPERTY OF ALVARADO MANUFACTURING INC. ANY REPRODUCTION IN PART OR AS A WHOLE WITHOUT THE WRITTEN PERMISSION OF ALVARADO MANUFACTURING INC. IS PROHIBITED.

DO NOT SCALE DRAWING

**ALVARADO**  
dormakaba Group

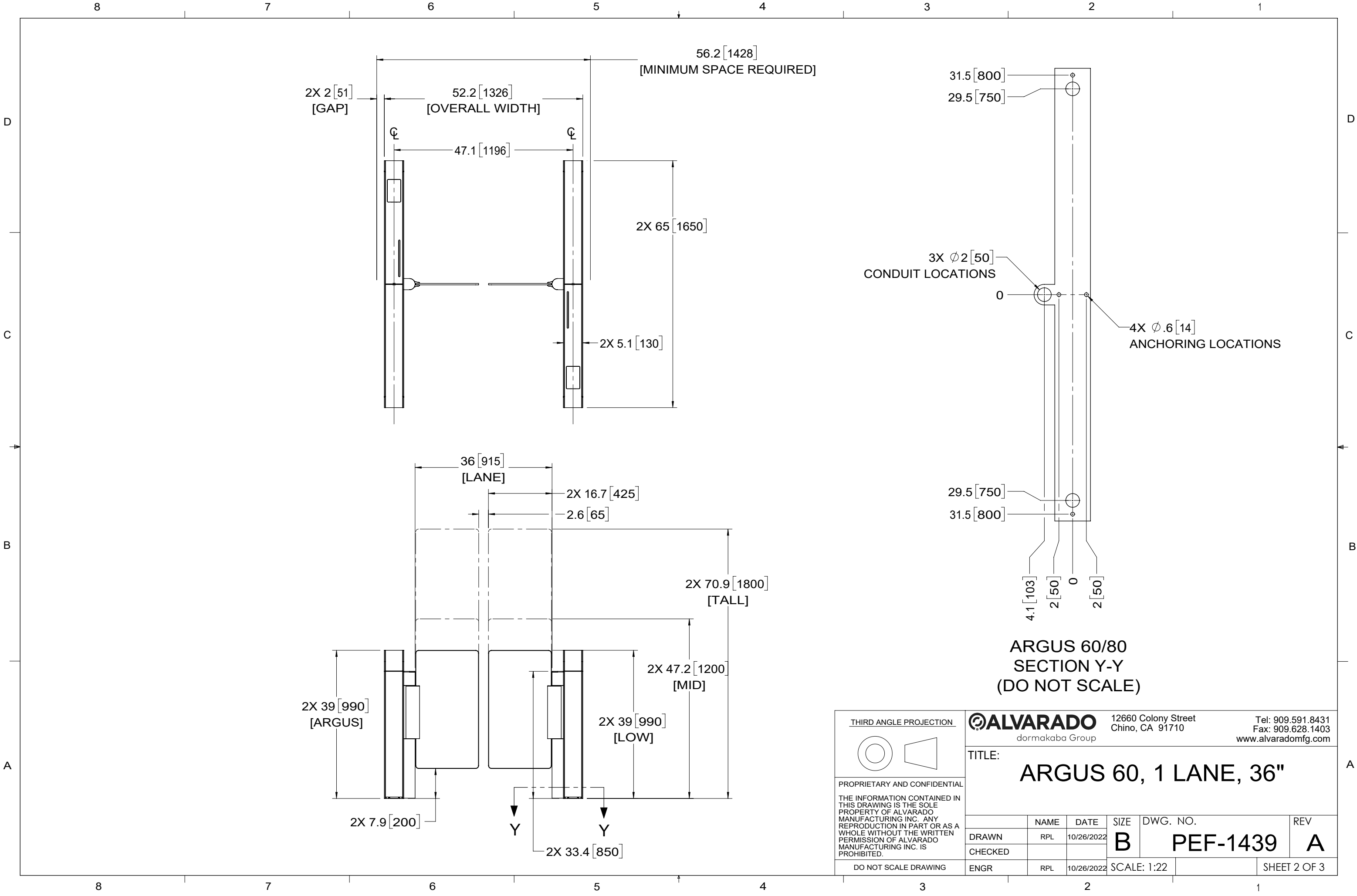
12660 Colony Street  
Chino, CA 91710

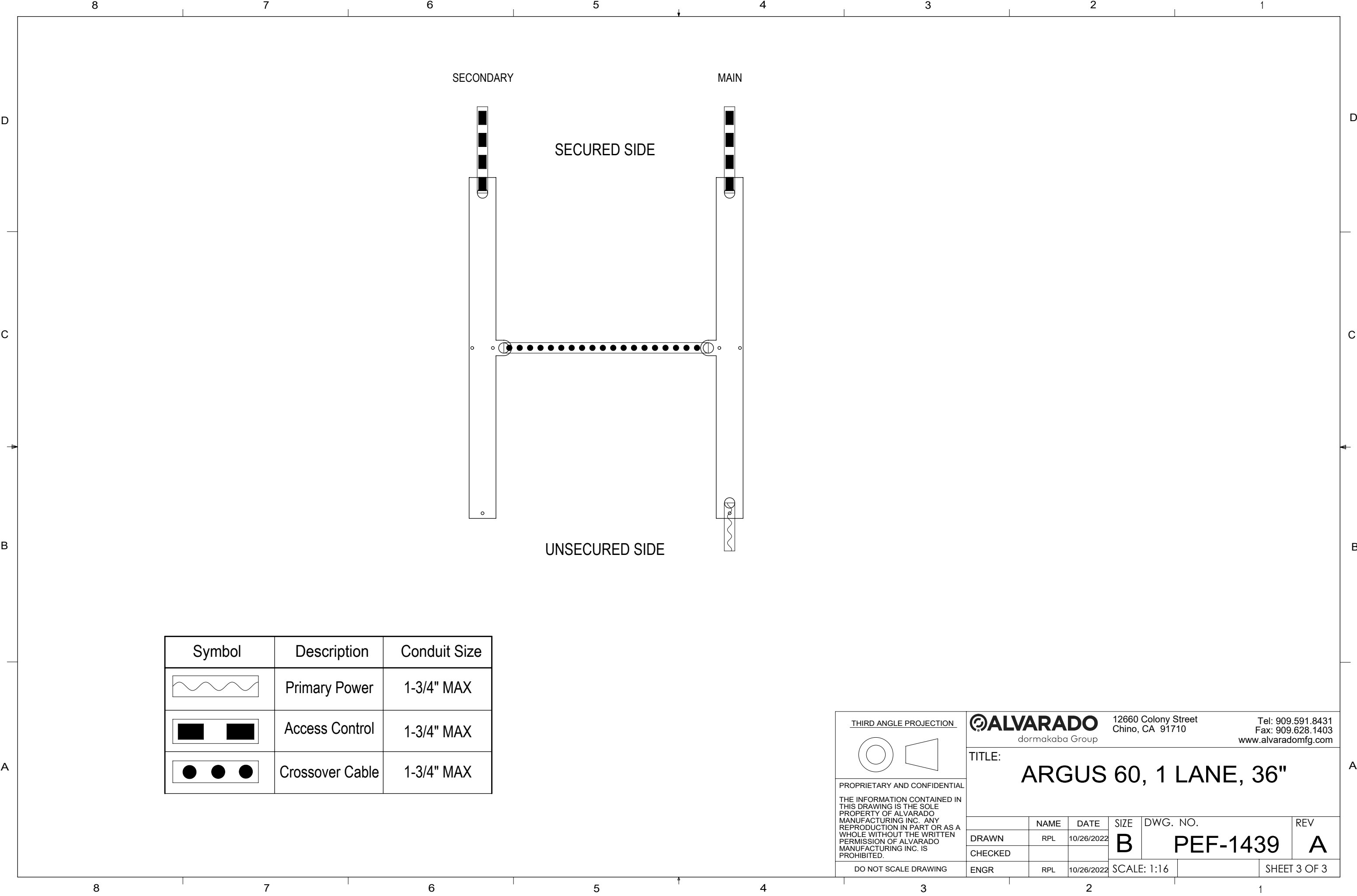
Tel: 909.591.8431  
Fax: 909.628.1403  
www.alvaradomfg.com

TITLE:

**ARGUS 60, 1 LANE, 36"**

	NAME	DATE	SIZE	DWG. NO.	REV
DRAWN	RPL	10/26/2022	<b>B</b>	<b>PEF-1439</b>	<b>A</b>
CHECKED					
ENGR	RPL	10/26/2022	SCALE: 1:28		SHEET 1 OF 3





Symbol	Description	Conduit Size
	Primary Power	1-3/4" MAX
	Access Control	1-3/4" MAX
	Crossover Cable	1-3/4" MAX

THIRD ANGLE PROJECTION

PROPRIETARY AND CONFIDENTIAL

THE INFORMATION CONTAINED IN THIS DRAWING IS THE SOLE PROPERTY OF ALVARADO MANUFACTURING INC. ANY REPRODUCTION IN PART OR AS A WHOLE WITHOUT THE WRITTEN PERMISSION OF ALVARADO MANUFACTURING INC. IS PROHIBITED.

DO NOT SCALE DRAWING

**ALVARADO**  
dormakaba Group

12660 Colony Street  
Chino, CA 91710

Tel: 909.591.8431  
Fax: 909.628.1403  
www.alvaradomfg.com

TITLE:

**ARGUS 60, 1 LANE, 36"**

	NAME	DATE	SIZE	DWG. NO.	REV
DRAWN	RPL	10/26/2022	<b>B</b>	<b>PEF-1439</b>	<b>A</b>
CHECKED					
ENGR	RPL	10/26/2022	SCALE: 1:16		SHEET 3 OF 3