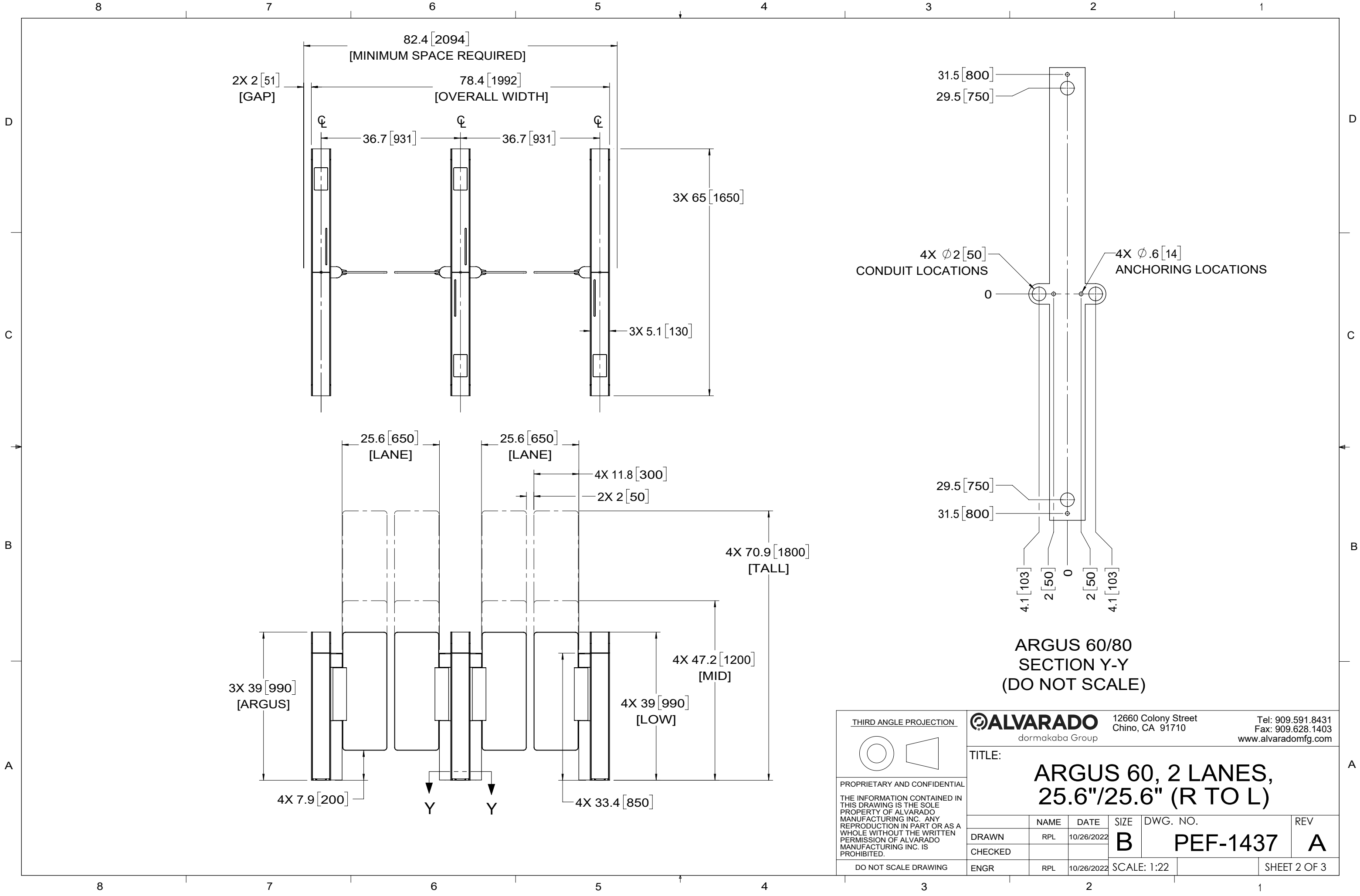


- NOTES:
1. ALL DIMENSIONS ARE APPROXIMATE AND IN INCHES [mm].
 2. ALVARADO RECOMMENDS 25.6" WIDTH LANES BE USED FOR GENERAL PURPOSE ENTRY/EXIT CONTROL. ALVARADO RECOMMENDS 36" WIDTH LANES BE RESERVED FOR USE BY PATRONS WITH SPECIAL REQUIREMENTS.
 3. MULTIPLE BARRIER SIZES SHOWN FOR ILLUSTRATION ONLY. CUSTOMER TO CHOOSE BARRIER HEIGHT PER ORDER.

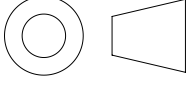
| | | | | | | | | | | | |
|--|--|-------------|--|------------------------------------|--|--|--|---|--|-----------------|--|
| THIRD ANGLE PROJECTION | | | | ALVARADO dormakaba Group | | 12660 Colony Street Chino, CA 91710 | | Tel: 909.591.8431 Fax: 909.628.1403 www.alvaradomfg.com | | | |
| TITLE: ARGUS 60, 2 LANES, 25.6"/25.6" (R TO L) | | | | | | | | | | | |
| DRAWN | | NAME RPL | | DATE 10/26/2022 | | SIZE B | | DWG. NO. PEF-1437 | | REV A | |
| CHECKED | | | | | | SCALE: 1:28 | | | | SHEET 1 OF 3 | |
| DO NOT SCALE DRAWING | | ENGR | | RPL | | 10/26/2022 | | | | | |

PROPRIETARY AND CONFIDENTIAL

THE INFORMATION CONTAINED IN THIS DRAWING IS THE SOLE PROPERTY OF ALVARADO MANUFACTURING INC. ANY REPRODUCTION IN PART OR AS A WHOLE WITHOUT THE WRITTEN PERMISSION OF ALVARADO MANUFACTURING INC. IS PROHIBITED.



THIRD ANGLE PROJECTION



PROPRIETARY AND CONFIDENTIAL

THE INFORMATION CONTAINED IN THIS DRAWING IS THE SOLE PROPERTY OF ALVARADO MANUFACTURING INC. ANY REPRODUCTION IN PART OR AS A WHOLE WITHOUT THE WRITTEN PERMISSION OF ALVARADO MANUFACTURING INC. IS PROHIBITED.

DO NOT SCALE DRAWING

ALVARADO
dormakaba Group

12660 Colony Street
Chino, CA 91710

Tel: 909.591.8431
Fax: 909.628.1403
www.alvaradomfg.com

TITLE:

**ARGUS 60, 2 LANES,
25.6"/25.6" (R TO L)**

| | NAME | DATE | SIZE | DWG. NO. | REV |
|---------|------|------------|-------------|-----------------|--------------|
| DRAWN | RPL | 10/26/2022 | B | PEF-1437 | A |
| CHECKED | | | | | |
| ENGR | RPL | 10/26/2022 | SCALE: 1:22 | | SHEET 2 OF 3 |

