


- NOTES:
- 1. ALL DIMENSIONS ARE APPROXIMATE AND IN INCHES [mm].
  - 2. ALVARADO RECOMMENDS 25.6" WIDTH LANES BE USED FOR GENERAL PURPOSE ENTRY/EXIT CONTROL. ALVARADO RECOMMENDS 36" WIDTH LANES BE RESERVED FOR USE BY PATRONS WITH SPECIAL REQUIREMENTS.
  - 3. MULTIPLE BARRIER SIZES SHOWN FOR ILLUSTRATION ONLY. CUSTOMER TO CHOOSE BARRIER HEIGHT PER ORDER.

THIRD ANGLE PROJECTION

PROPRIETARY AND CONFIDENTIAL

THE INFORMATION CONTAINED IN THIS DRAWING IS THE SOLE PROPERTY OF ALVARADO MANUFACTURING INC. ANY REPRODUCTION IN PART OR AS A WHOLE WITHOUT THE WRITTEN PERMISSION OF ALVARADO MANUFACTURING INC. IS PROHIBITED.

DO NOT SCALE DRAWING

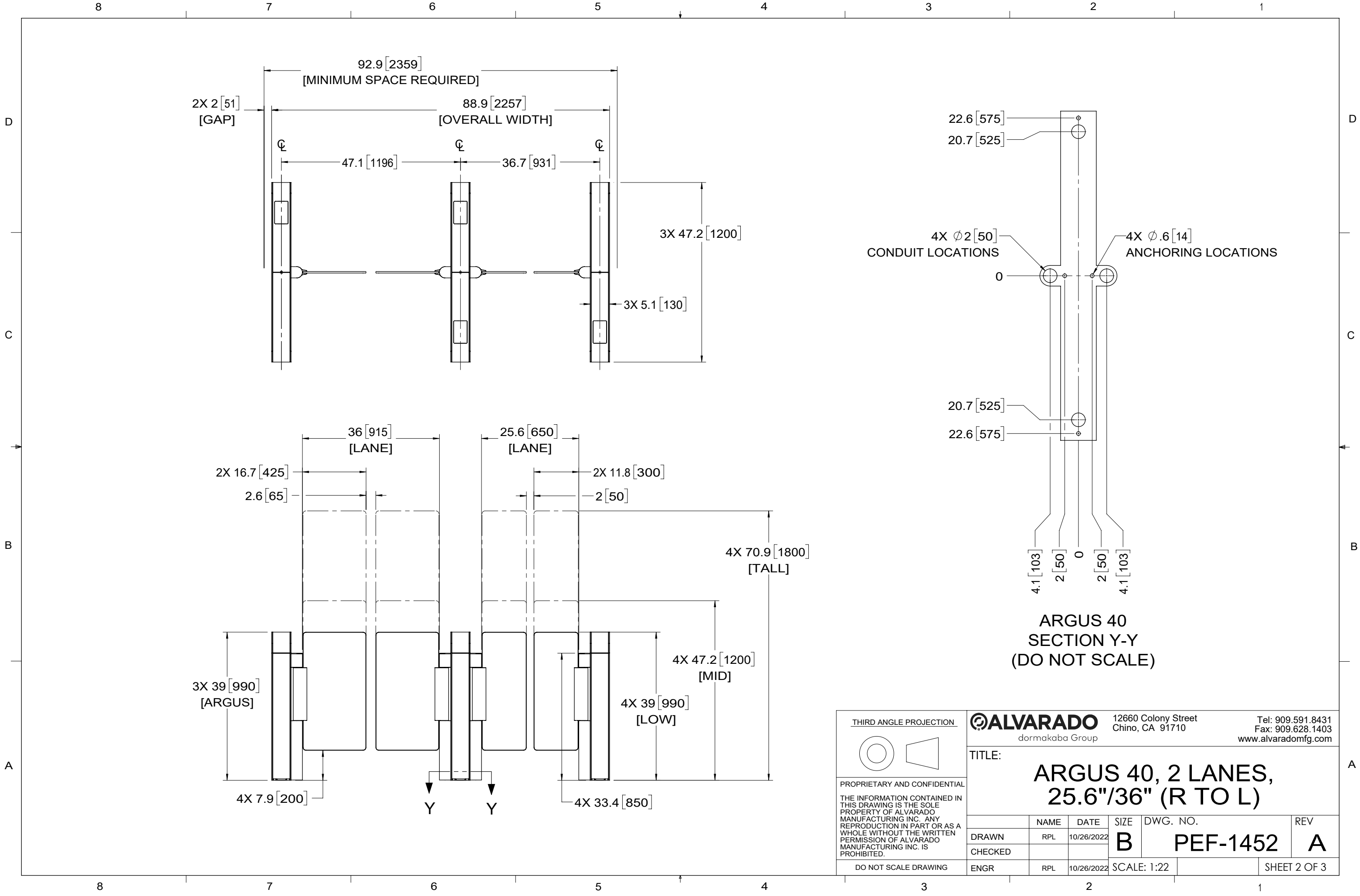
12660 Colony Street  
Chino, CA 91710

Tel: 909.591.8431  
Fax: 909.628.1403  
www.alvaradomfg.com

TITLE:

ARGUS 40, 2 LANES,  
25.6"/36" (R TO L)

	NAME	DATE	SIZE	DWG. NO.	REV
DRAWN	RPL	10/26/2022	B	PEF-1452	A
CHECKED					
ENGR	RPL	10/26/2022	SCALE: 1:28		SHEET 1 OF 3



<b>THIRD ANGLE PROJECTION</b>		<b>ALVARADO</b> dormakaba Group		12660 Colony Street Chino, CA 91710		Tel: 909.591.8431 Fax: 909.628.1403 www.alvaradomfg.com	
TITLE: <b>ARGUS 40, 2 LANES, 25.6"/36" (R TO L)</b>							
DRAWN		NAME RPL		DATE 10/26/2022		SIZE <b>B</b>	
CHECKED						DWG. NO. <b>PEF-1452</b>	
DO NOT SCALE DRAWING		ENGR		RPL		10/26/2022	
				SCALE: 1:22		SHEET 2 OF 3	

