

ALVARADO

Model VSG Gate – Models VSG, VSGX-1,



Technical Specifications

Dimensions	<u>Unit Height:</u>	40.0" (101.6 cm)
	<u>Unit Width:</u>	48.0" (121.92 cm)
	<u>Unit Depth:</u>	6.0" (15.24 cm)
Function	The VSG gate is a self closing gate. Various models are available, including electric locking versions that can be integrated with an access control system. All VSG models are self-closing and include entry kick plates. In most applications, VSG gates meet selected guidelines contained in the Americans with Disabilities Act Accessibility Guidelines (ADAAG) as issued by the Architectural and Transportation Barriers Compliance Board. Note: Because of the potential for varying standards, Alvarado makes no representation regarding the compliance of the VSG products with any state or local laws or regulations regarding public access.	
Available Configurations	The VSG gate is a self closing gate. Various models are available, including electric locking versions that can be integrated with an access control system. All VSG include a heavy duty hydraulic closure mechanism. VSG gates are often installed in conjunction with Alvarado's turnstiles. The following models are available.	
	VSG-1 –	The VSG-1 is a manually opening non-locking gate. The VSG-1 swings in one direction, opens approximately 90 degrees and smoothly self-closes with the gate closing controlled by a hydraulic closure. The VSG-1 comes with either infill bars or a clear acrylic panel and is ordered with either a right or left hand swing.
	VSGX-1 –	The VSGX-1 is a manually opening locking gate. The VSGX-1 locks in the "home" position using a 600 lb. holding force magnetic lock. Upon activation, the VSGX-1 swings in one direction, opens approximately 90 degrees and smoothly self-closes with the gate closing controlled by a hydraulic closure. The VSGX-1 comes with either infill bars or a clear acrylic panel and is ordered with either a right or a left hand swing.
Mechanical Components	<u>Gate</u>	The Gate is a fully welded assembly consisting of 2" X 2" square stainless steel tubing. The gate has a 8" high kickplate on both sides of the gate running the length of the gate. The gate is ordered with infill bars, which consist of 1 ½" stainless steel square tubing evenly across the width of the gate or a clear acrylic interior panel held in place with glass clips. The bottom of the gate arm is approximately 1.5" from the floor.
	<u>Gate Frame</u>	The Gate Frame consists of a hinge post and latch post. The hinge and latch post are fabricated from 2 ½" square stainless steel tubing and each contains a circular base plate for anchoring and stainless steel base covers to hide anchoring bolts.
	<u>Gate Closure</u>	All VSG gates have a self-closing gate closure mechanism.

Electrical & Locking Components	<u>VSGX-1</u>	Magnetic Lock: <ul style="list-style-type: none"> - Fail safe - Input power: 12VDC - Current draw: 250 mA @ 12VDC maximum - Holding force: 600 lbs - 120 VAC to 12 VDC wall transformer included
Activation	<u>VSGX-1</u>	The VSGX-1 requires a sustained dry contact switch input to unlock the gate. The gate lock will not re-engage until the switch is released and the gate arm is closed. Follow wiring diagrams in the installation manual supplied with the gate.
Available Finishes	<u>Mirror Stainless Steel</u>	All external materials are polished to a mirror (#8) finish.
	<u>Satin Stainless Steel</u>	All external materials are polished to a satin (#4) finish.
Shipping Details		VSG gates are shipped in crates. Each unit includes mounting hardware (anchors, bolts, washers, etc.) to attach the unit to a concrete pad. Alvarado ships product throughout the world.
Installation Details		Gates must be installed on a firm foundation in a manner that allows the required power and activation signal cabling to be pulled to the top of the gate frame. Gates must be level for proper operation.
Approximate Weight		Approximately 50 lb (22.68 kg).

Options

Push Bar

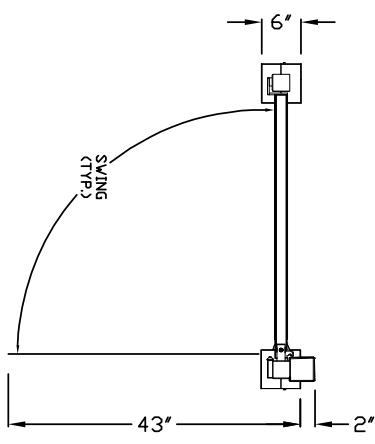
A switch activated push release bar is wired into the magnetic lock and when depressed, unlocks the magnetic lock.

Magnetic Door Status Switch

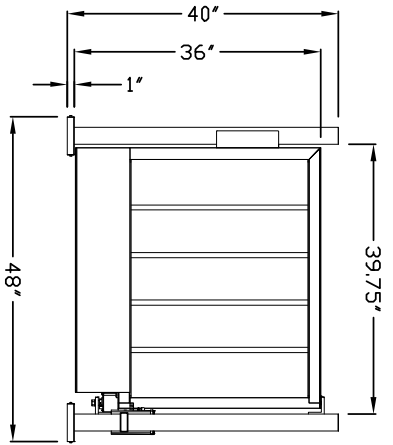
When magnetic contacts are broken, output signal indicates that door is open. The switch is a SPST contact supplied with two lead in wires for field connection. This option is available on all models.

Large "Press to Exit" Button Assembly

A 3.15 inch square switch box assembly constructed of stainless steel with a DPDT push button switch. Includes zinc plated mounting plate for attachment to wall, desk or other fixed item. The switch is field wired into the strike or magnetic lock power cable to unlock the gate from a remote position such as a guard shack. This option is available for the VSGX model.



PLAN VIEW



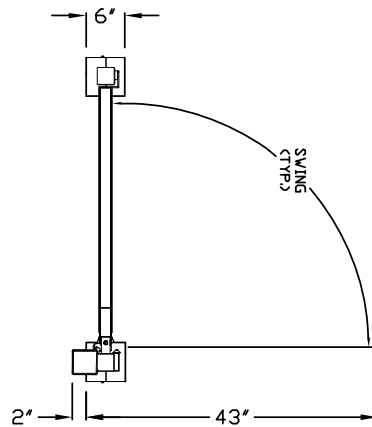
ELEVATION VIEW

ALL DIMENSIONS ARE APPROXIMATE

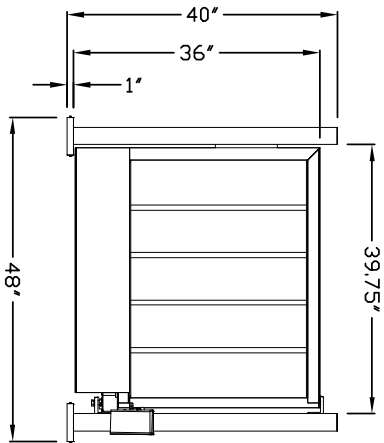
NOTE: THIS PRINT AND DESIGN ARE THE PROPERTY OF ALVARADO MANUFACTURING COMPANY, INC. IT MUST NOT BE REPRODUCED IN ANY MANNER, NOR MUST IT BE REPRODUCED IN ANY MANNER, NOR EXAMINATION OF ANY KIND WITHOUT THE WRITTEN PERMISSION OF ALVARADO MANUFACTURING COMPANY, INC. THIS DRAWING IS USED ONLY AS A MEANS OF REFERENCE TO WORK DESIGNED AND FURNISHED BY ALVARADO. ALVARADO RESERVES THE RIGHT TO MAKE CHANGES TO THIS DRAWING WITHOUT NOTICE. REVISIONS MAY NOT BE NOTED.

VSGX-1 WAIST HIGH GATE (LEFT-HAND)	
DWG#	REV#
LT306SLH	C
ALVARADO MANUFACTURING, INC. 12660 Colony Court Cano, California, USA 91110-2975 PH: (909) 591-6424	
DRAWN BY	DATE
M. LAU	04-10-2008
SCALE	SHEET
NTS	1 OF 1
SIZE	QTY
B	1

UPDATED DATE: 3/12/09



PLAN VIEW



ELEVATION VIEW

ALL DIMENSIONS ARE APPROXIMATE

NOTE: THIS PRINT AND DESIGN ARE THE PROPERTY OF ALVARADO MANUFACTURING, INC. AND SHALL NOT BE REPRODUCED IN ANY MANNER, NOR SHALL IT BE SUBMITTED TO OUTSIDE PARTIES FOR EXAMINATION WITHOUT OUR CONSENT. IT SHALL BE USED ONLY AS A REFERENCE TO WORK. ALVARADO RESERVES THE RIGHT TO MAKE CHANGES TO DESIGN FOR ENGINEERING PURPOSES WITHOUT NOTICE. REVISIONS MAY NOT BE NOTED.

VSGX-1 WAIST HIGH GATE (RIGHT-HAND)		DATE	2-26-09
DWG#	LT3065RH	SHEET	1 OF 1
REV#	B	QTY	1
ALVARADO MANUFACTURING, INC. 12660 Colony Court Chico, California, USA PH: (909) 591-5411			
DRAWN BY	JIGUERERO		
SCALE	NTS		
SIZE	B		